



HOLISTIC RENEWAL OF THE MONUMENTAL SPLENDOUR

In our vision the renewed Charles Square is multi layered in its appearance and in its meanings: it is cultural heritage as well as a vibrant city square and a lush green paradise at the same time. We provide a holistic plan; on the one hand it is based on the history and on the other hand it is a step into the future. We want to give expression to the historical layer of main square of the New Town from the 15st century, to the pilgrimage destination in the Holy Roman Empire and to the eclectic park design style from the late 19th century. At the same time we want to improve the nowadays accessibility and the quality of the ambience when staying there. We want to activate and modernize the park use and we want to adapt the green quality to the climate change. We see this square as part of the city centre, a connectivity point between the relatively calm New Town neighbourhoods and the vibrant city heart. All these qualities are only partly preserved, have disappeared partly or are damaged by the increase of

traffic and the lack of maintenance in the last century. Our approach is to heal these wounds and bring back the splendour of the earlier periods, but also to give a contemporary touch and ensure durability for the future. Charles Square will be a quality square again, by reducing the traffic, by activating the facades and the park edge and by bringing the inner city quality to the square. We also strengthen and restore the lush green paradise quality, introduced by Thomayer, by improving the water management solutions of the park and also the growing conditions of the trees. New and more interactive water features, contemporary art and space for nowadays activities are introduced. The result is a unique combination of an urban square and a green paradise, a tribute to the history and a durable frame for all present and future activities of people. A holistic renewal of the monumental splendour!!

REVITALISATION OF CHARLES SQUARE procurement procedure involving Competitive Dialogue 2017/2018

DESIGN PROPOSAL -FINAL BID Buro Sant en Co | Atelier M1 | Promika

Edwin Santhagens, Stephen Tas,
Veronika Kunclová, Erfan Farahmand,
Paul Plambeck, Sander Singor
Alexandre Parente, Jie Yang,
Nina de Munnik, Siqi Li

Pavel Joba
Pavel Mahdal

Šárka Veselá
Petr Pešťál





MASTERPLAN OF CHARLES SQUARE 2025

Buro Sant en Co | Atelier M1 | Promika

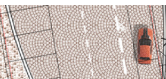


m 1:1000

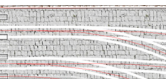
Pavement



City carpet sidewalks, lime stone 5 x 5 cm, mix Prague standard



Road, granite stone 10 x 10cm, mix Prague standard



Tram road, natural stone variable x 20 x 12 cm, 'Cat backs' Prague standard

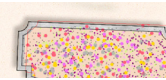


Historic park self binding gravel path (mlatová cesta), grey/yellow colour

Curbs/ walls / edges/ stairs



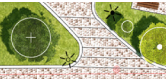
Curb, sand stone edge of the park paths, flat, 30 cm wide



Curb, sand stone edge of the park paths, lifted to sitting height, 50 cm wide



Metal edge between melt park path and stone paving



Stairs, natural stone blocks with lime stone paving 5 x 5 cm

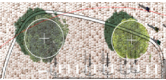
Furniture



Classical bench - renewed Charles square type bench



Monumental stone bench with wooden seat in the garden



Bicycle stands



Playground

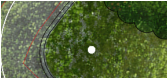


Fitness



Lamp post

Planting



Existing tree



New trees



Removed tree



Perrenial flowerbed



Compact low flowering shrubs in the garden



Compact high groups of shrubs



Mantle natural-like undergrowths with solitary transparent shrubs

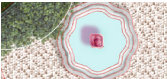


Lawn



Reinforced gravel lawn for sportfield

Water elements



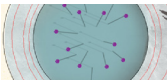
Historic baroque water fountain



Renewed water fountain

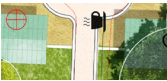


Small scale water elements

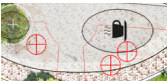


Water jets play square

Small architecture



Glasshouse - café and gardeners place



Kiosk



Parkin garage pedestrian entrance



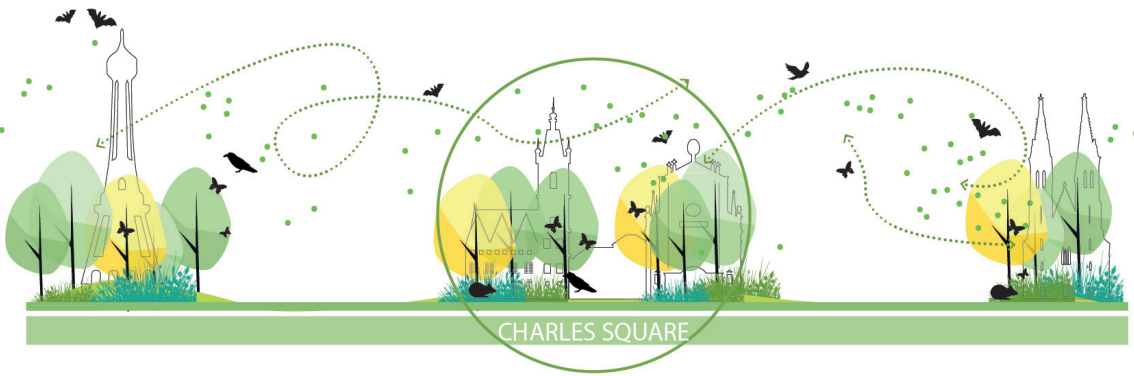
CHARLES SQUARE AS PART OF THE INNER-CITY

- inner-city quality is expressed by details and pavement
- reduction of traffic creates inner-city feeling
- still recognisable as a unique historical square



CHARLES SQUARE AS AN ECOLOGICAL STEPPING STONE

- the monumental park as one unity
- introducing native tree species and natural looking undergrow planting
- durable park



BROADER RELATIONS OF CHARLES SQUARE

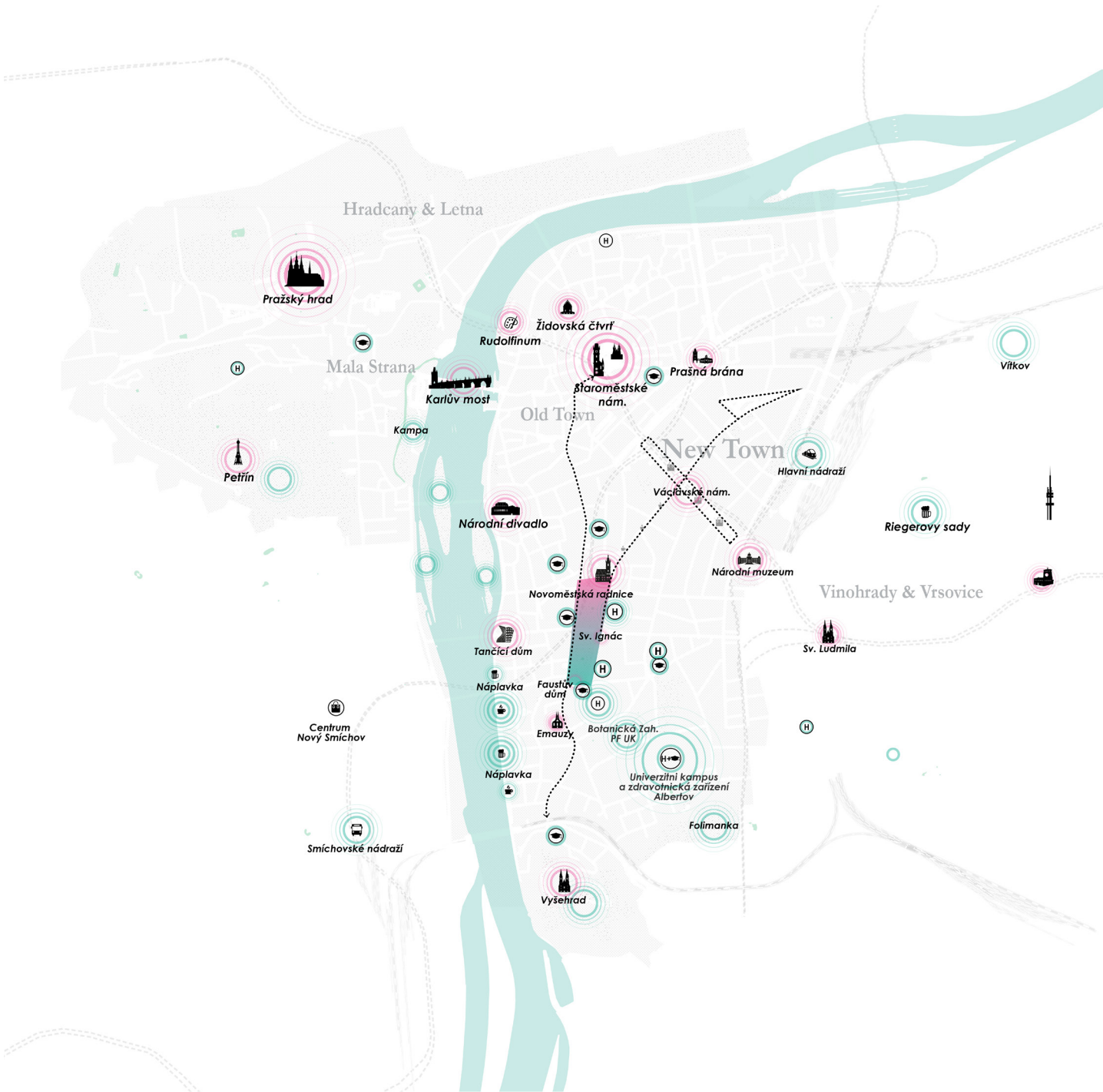
Buro Sant en Co | Atelier M1 | Promika

Part of the city centre
Charles Square is an inseparable part of the city centre. The quality and atmosphere of the square will be comparable with that of the inner-city. The square is connected to the rest of the inner-city by long historical roads. Reduction of traffic, with primacy on pedestrians and public transport, creates more inner-city quality.

Ecological stepping stone
Charles Square is divided in three parts, but it can be seen as one monumental park, a green lung with ecological potential. Charles Square is not attached to the main green structures of Prague but it can be an ecological stepping stone, especially for insects, birds and bats. To achieve that we maximize the green, the bio mass (trees, shrubs, perennials, grass), and introduce native tree species and natural-looking undergrowth. By doing this all Charles Square will be a durable ecological park.

Busy and calm
Charles Square is busy and calm at the same time, a duality we want to strengthen. It is well connected to the city centre by Spálená axis and Vodickova axis and forms, together with Václavské Square and Senovážne Square, the backbone of the New Town. Furthermore Charles Square is linked to the Vltava riverbanks. The northern part of Charles Square is more city-like, the most suitable for city activities, whilst the southern part is more calm and used for local activities: a leisure area connected to the leisure areas along the river.

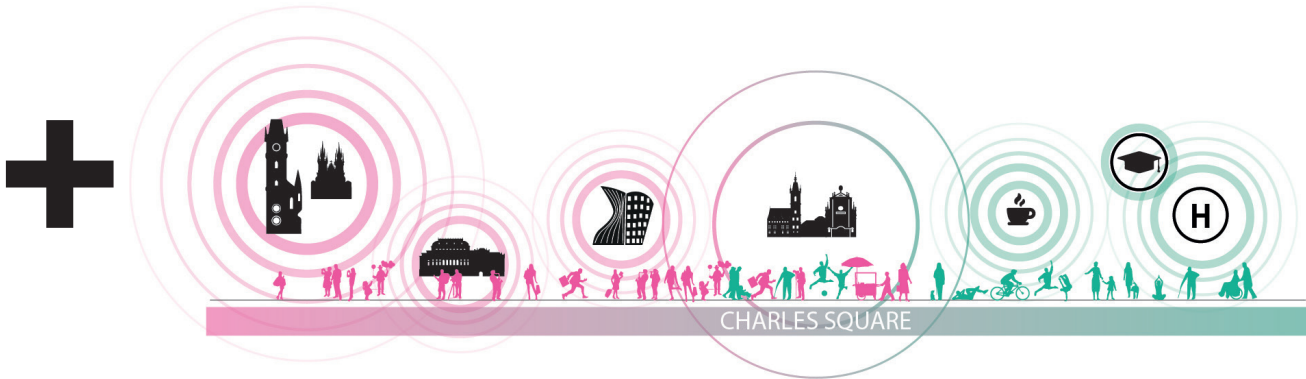
By reducing the car traffic and opening and activating the mantle of the park, we bring the inner-city quality in the streets around and in the park edge. Creating more liveliness and space along the facades has a positive impact on the park and will improve social security. The park mantle will serve as a connector between the vibrant city streets and an attractive park.

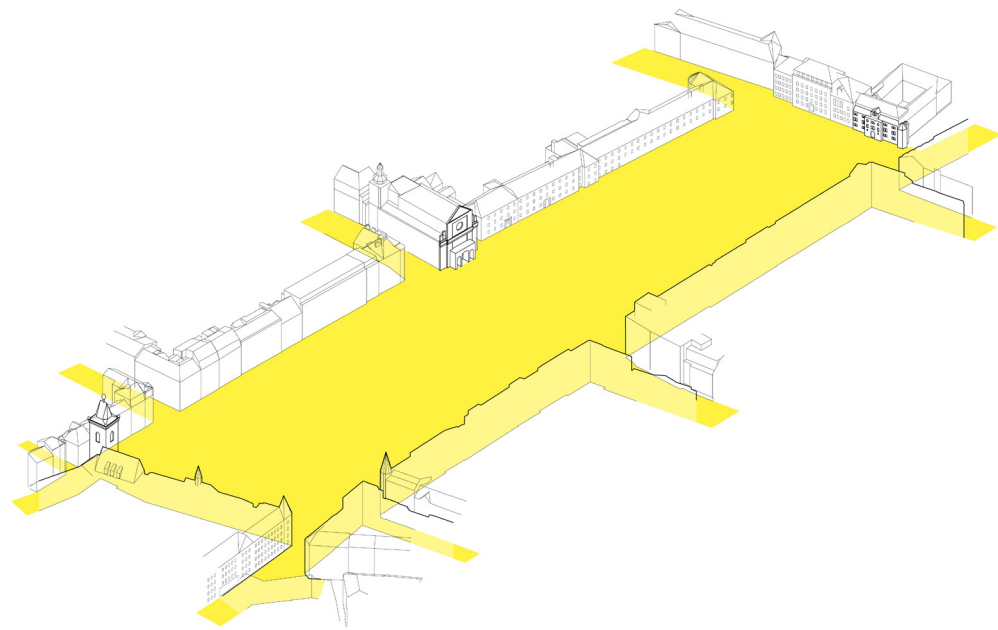


CONNECTS BUSY CENTRE WITH CALM SOUTH SIDE

- Spálená axis as a metropolitan route with tram, metro, shopping malls
- Vodickova axis a down town route with local cafés, restaurants and shops
- Charles Square linking Vltava riverbanks and Národní Míru/Národní museum
- the northern part is more city like, used for city activities
- the south part is more a neighborhood park, used for local activities

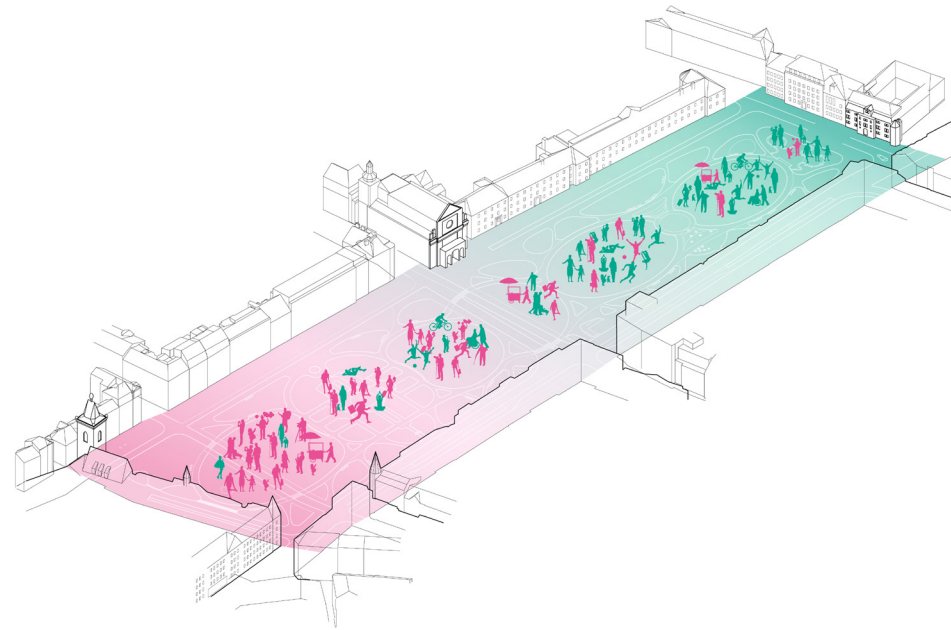
INNER CITY GREEN PARK SQUARE





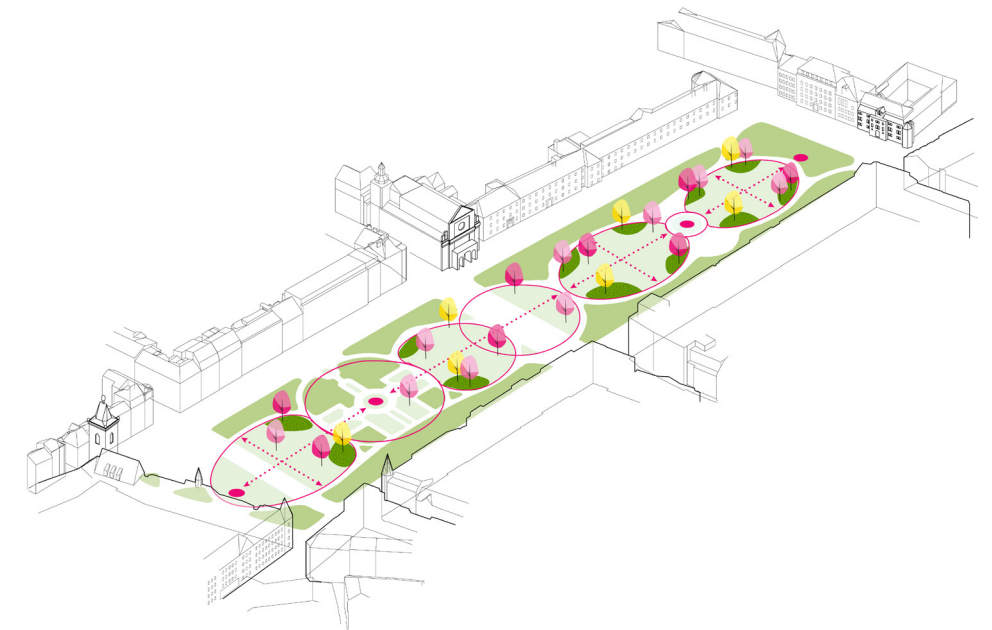
City floor from facade to facade

- part of inner-city
- mozaic, curbs, roads on the same level as the sidewalk
- yet a unique square in the centre with its own furniture and pavement pattern



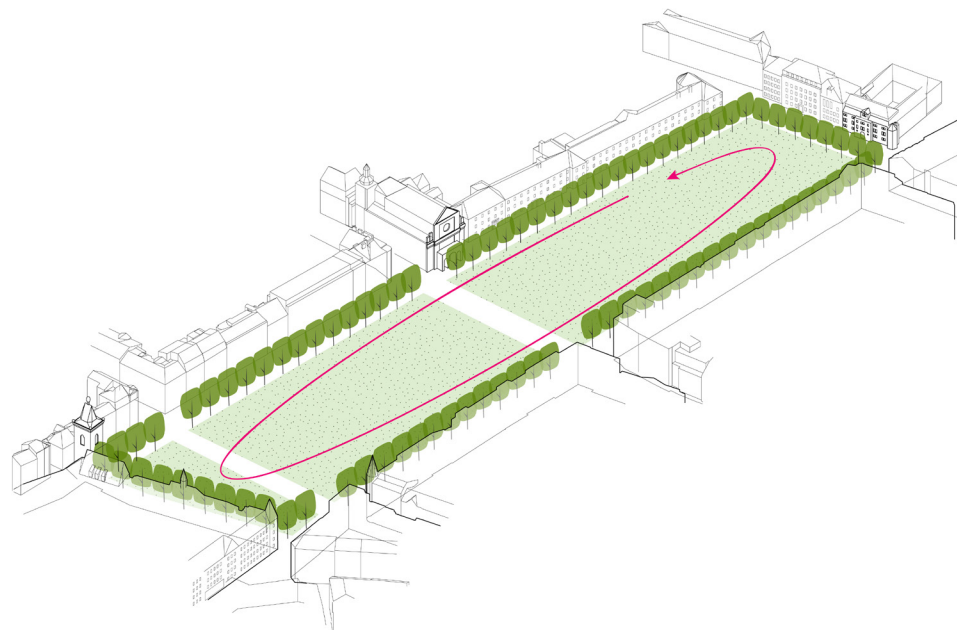
Nowadays programming from inner city to local leisure

- everyday use laying on the grass, meeting for lunch, restaurant, cafés integrated in renewed monument
- new functions are added: fresh and contemporary
- functions with a more local quality such as a playground, glasshouse and terraces
- functions with a more metropolitan impact such as events, water playground, space for podia, markets and art events



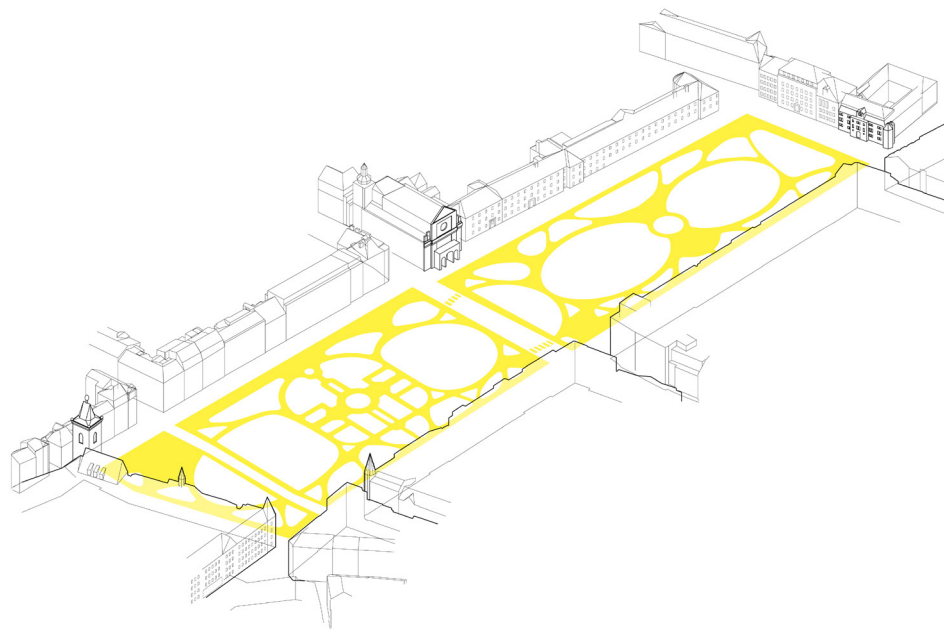
Restore Thomayer in the heart line

- adjust and renew the space sequence of lawns, making one park
- restore shrubs, adjust trees to emphasize this sequence
- renew the dendrological color palet
- restore symmetrical axes and sightlines
- renew flowy pathways from north to south
- restore and renew the city garden



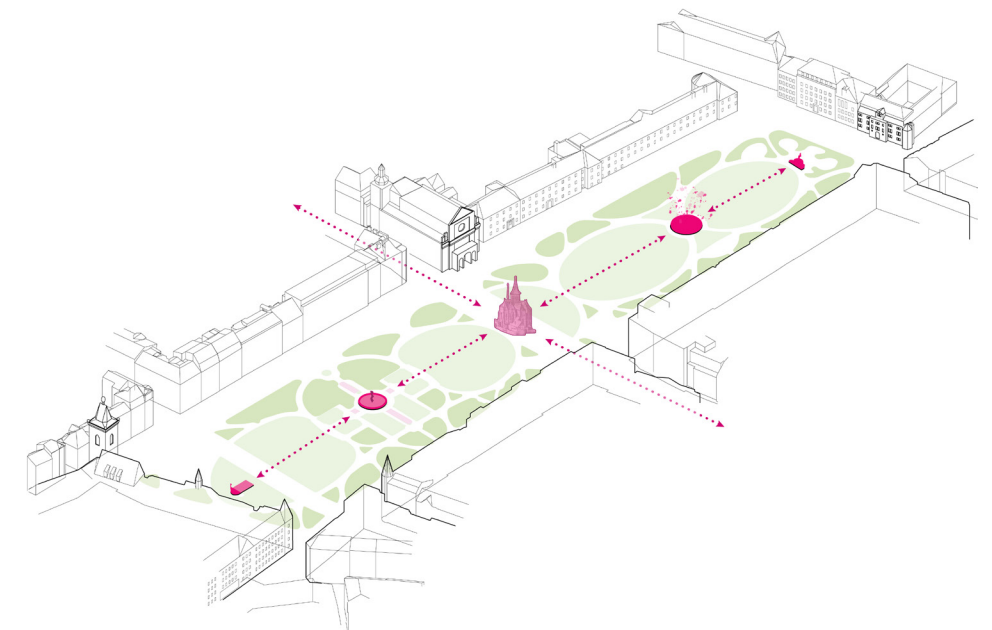
One park with architectonical tree edge

- creating clear city profiles around
- each profile has its own character
- emphasizing one park
- crossing roads are cutting through



Fluent path structure

- adjusting the path structure to create an easy accessible and traversable park
- perforating the park edge at the important acces points
- smoothly flowing paths cleverly guide people to the right directions by which the planting is protected



Visible focal points

- keeping the monuments in the north and south, restoring the green background behind the statues
- transform the waternodes to visible and attractive places for the city
- add a new central focal point on the axis of the city street in the heart of the park

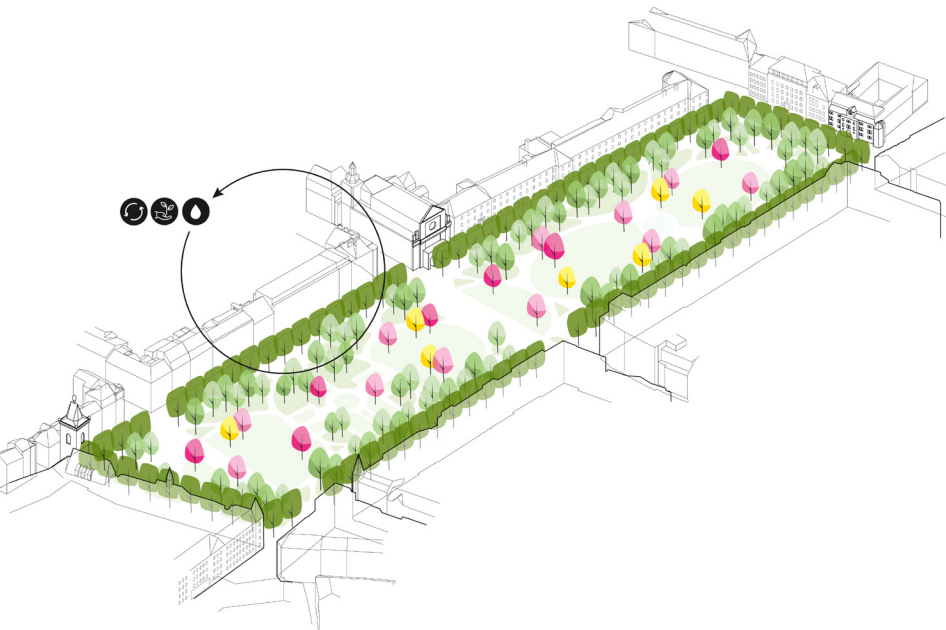
DESIGN CONCEPT

Buro Sant en Co | Atelier M1 | Promika

We see Charles square as a combination of restoration, revitalisation and renewal. In our holistic approach we work with different time layers, such as the layer of a medieval square, a 19th century lush park and a 21st century vibrant and attractive city space that is durable for future generations.

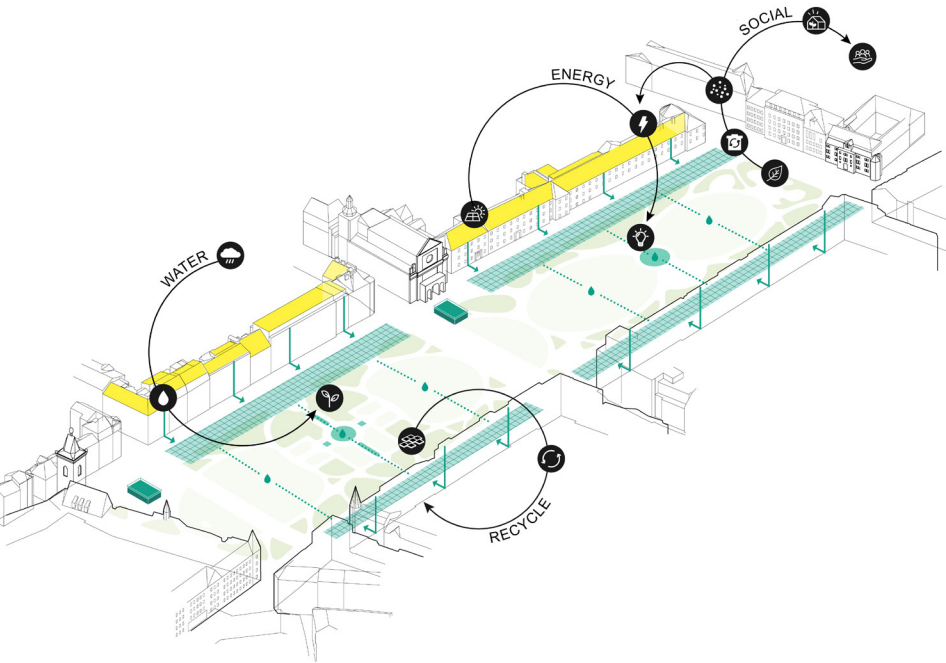
Our design is a tribute to Thomayer; we choose to emphasize the contrast between the straight treelines on the outside and the soft landscape of Thomayer in the heart line of the square. Because of this green frame Charles Square is part of the architecture of the city; the trees add value to the streets around and transform the sidewalks to park promenades. The dense park edge will stay dense and hilly but will be more inviting because of perforations on logical places that make it easy and more inviting to enter the park. For the park design we reconstructed the Thomayer line structures as much as possible, we made some adjustments and simplifications to make an optimal situation for pedestrians to walk in and cross the park. The two existing focal points will be revived, a new one will be introduced in the very heart of the park (a hologram of the lost chapel, only visible in the evening), the ones at both ends will be more visible and more lively.

Thus: We strengthen the square qualities by allowing more flexible movements across the square park, by creating spaces for events and markets and by connecting the park to the facades, that define the square, by logically perforating the green mantle. We revitalise the park, improving the ecological and hydrological conditions, and restoring Thomayer’s main design principles of tree structure defining the inner sequence of lawns and focal points with winding scenic paths around, while adjusting them to the current needs of pedestrian traffic, rain water management and ecology. And finally, we add a variety of nowadays programming, varying from inner city character in the north to a more local leisure character in the south.



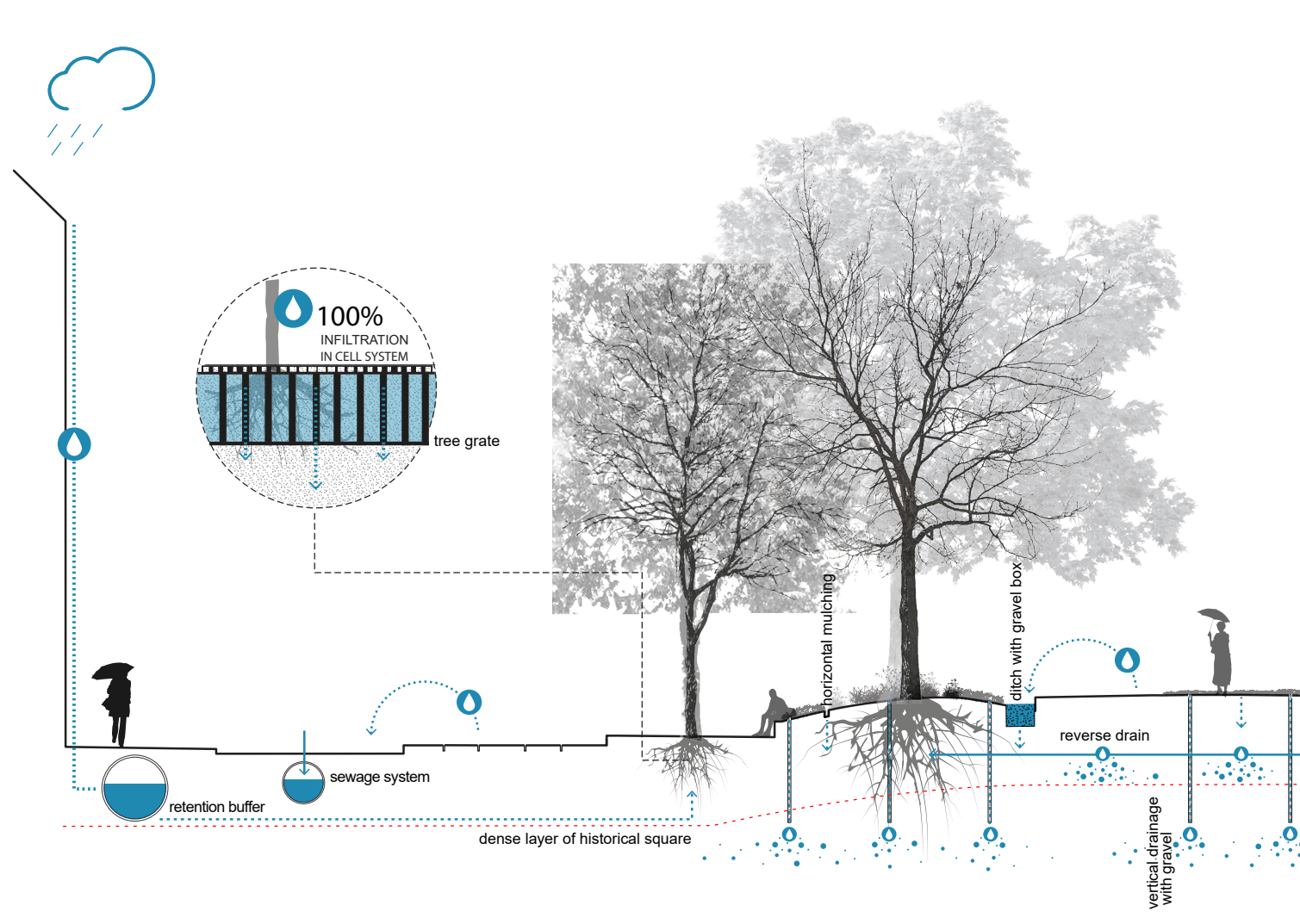
Durable tree approach

- the park is made by it’s trees
- changing the soil conditions to prevent existing trees from dying
- change the water conditions to improve growing conditions
- plant new trees in a durable way



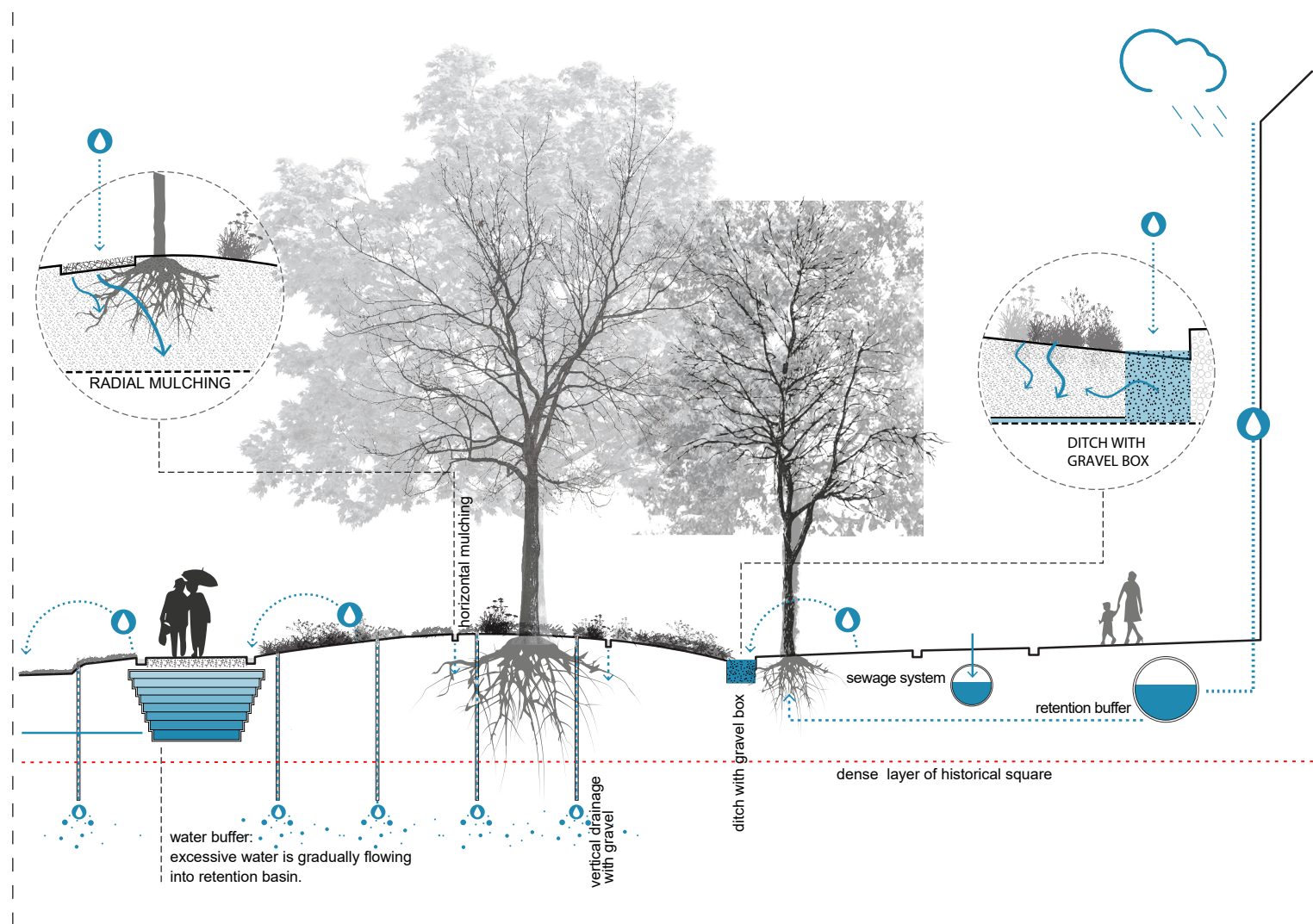
Durable 21st Century approach

- Circularity and local produced materials
- planned, made and maintained together with the local society
- Smart water management using rainwater basins, reverse damage
- Smart energy management: energy production by solar panels, use of LED



LOWER WEST SIDE

- park paths are lifted above the grass
- water flows into the mantle
- Infiltration by vertical drainage
- radial mulching at existing trees
- rooftop rainwater is collected in retention basins
- trees in pavement will have a cell system for water infiltration and air

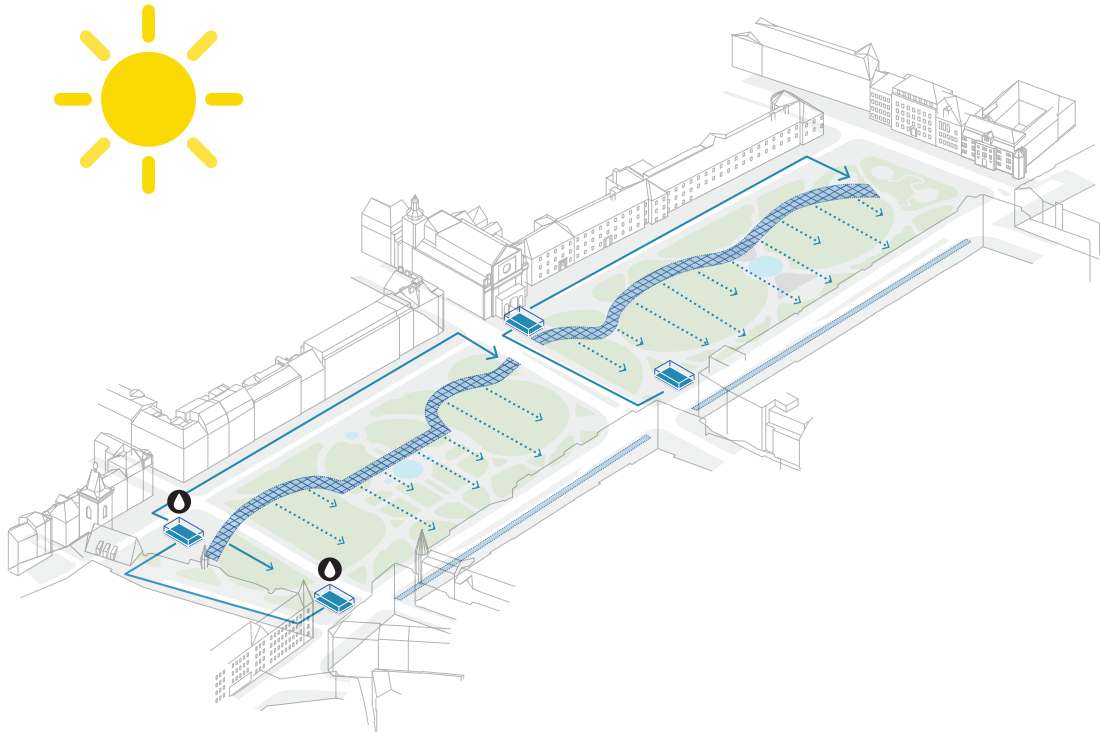


HIGHER EAST SIDE

- one surface between park and facades is created, leading water towards the mantle
- park paths are lifted above the grass
- the water flows on the lawns to infiltrate
- water buffers are created under the main path
- reversed drainage is attached on the water buffer and functions as a dripping system for the park
- rooftop rainwater is collected in retention basins

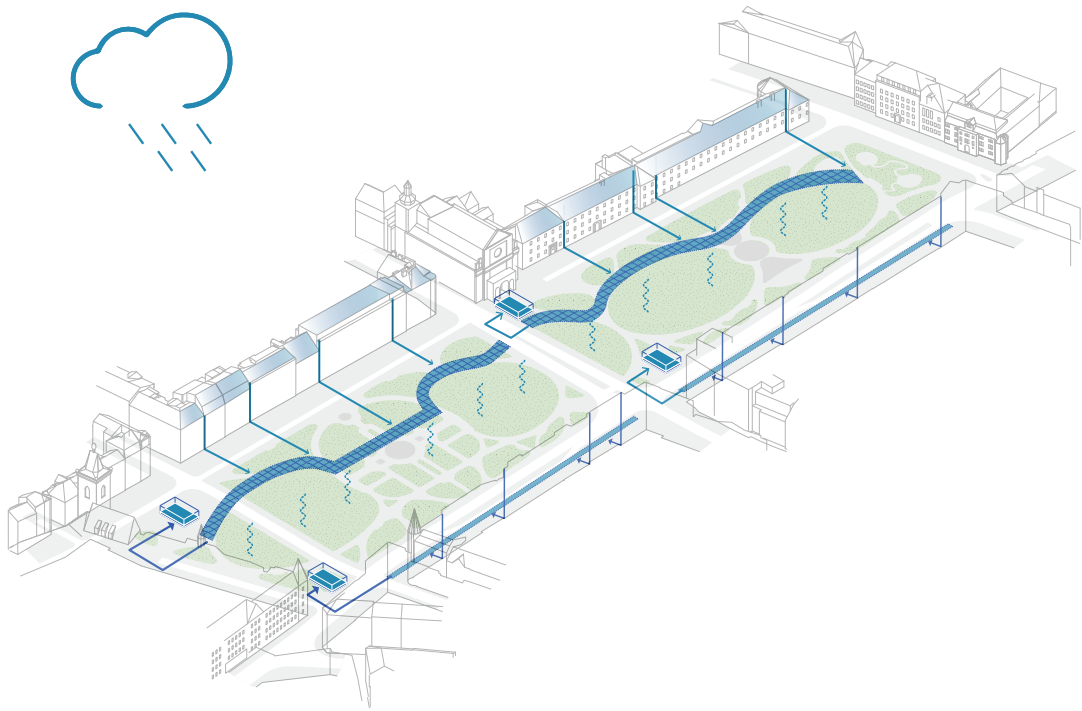
RAINWATER MANAGEMENT SYSTEM

Buro Sant en Co | Atelier M1 | Promika



Watermanagement in dry season

Water is released from the buffer into the park using reverse draining and the natural slope

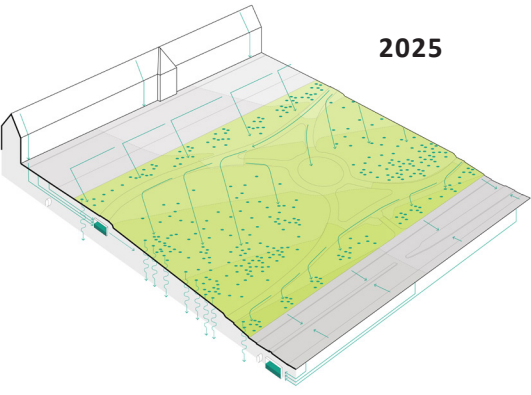
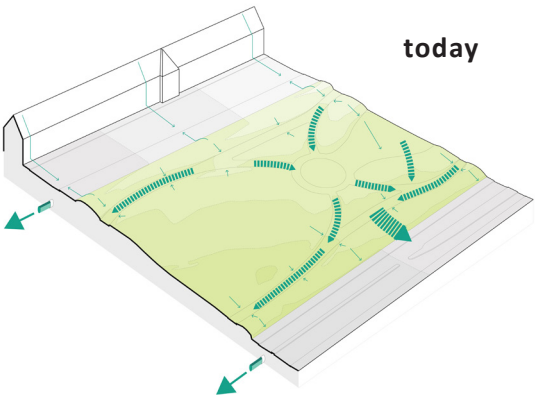


Water collection of roofwater and infiltration of rain water in the park

A part of the water is stored in the water buffer and retention basins, the rest will flow on the lawns and in the mantle to infiltrate

Because of climate change (longer periods of high temperature, more evaporation, drought but also irregular heavy rainfalls) the water system of Charles Square has to be made climate-adaptive. A good rainwater management is one of the key issues in order to keep the park green and healthy and avoid local flooding. To achieve this first of all we want to improve the quality of the soil in order to have it working as a sponge. Furthermore we propose a system that uses the natural sloping of the terrain. By creating water retention ditch-like zones on the upper side of the green mantle and by removing the terrain modulation of the lawn edges, the natural flow of rainwater from the higher positioned paved surfaces and paths is directed into the vegetation surfaces and lawns where it can slowly infiltrate. By levelling the street and the park surfaces on the east upper side of the square, the water from these streets can flow and infiltrate into the park.

For the horizon of 2025 water buffer areas are proposed under the main park path on the Eastern side, serving both for drought and flood prevention purposes. On rainy days rainwater will be collected in the water buffers, in dry periods this water will be dripped into the park with inverse draining. As a surplus, the water from the roofs is collected in deep rainwater retention basins. When needed this retention water will be pumped into the water buffers. In the horizon 2050, extra retention basins can be added in the street area on the Western side. The water from those retention basins can also be used for park irrigation.



From water runoff towards watercollection and infiltration

Nowadays the rainwater flows towards the paths creating erosion, the rainwater is collected in the sewer system. With slight morphology changes and by removing curbs the rainwater is directed into the mantle and on the lawns to infiltrate.



Small scale street



Central lawn



Activity field



Busy street



Event lawn



City garden

PROGRAMME AND FUNCTIONS OF THE PARK

Buro Sant en Co | Atelier M1 | Promika

In terms of program and function Charles Square is a hybrid between square and park, busy and calm. The dual character can be found in our design.

We react on the city context: inner-city quality in the north with markets, cafeterias, and more local character in the south with playgrounds, fitness and sport lawn. The green mantle is activated, more transparent and permeable - a mediator between the city and the park and a lively boost for both. In the park, everyday activity is mainly in the focal points. The garden is renewed with modern planting, water elements and lighting, the terrain modulation is restored, and a café with palms is placed as a new attractive function and a reference to the historical planting. The south node is restored as a water square: playful for kids and flexible (e.g. to place a stage). A new attractive node, reminiscing the location of the lost chapel is added; an evening lighting performance. The lawns and the square at the New Town Hall are flexible, city events can take place here. The most southern lawn, with reinforced grass, is for many sports and small local events.

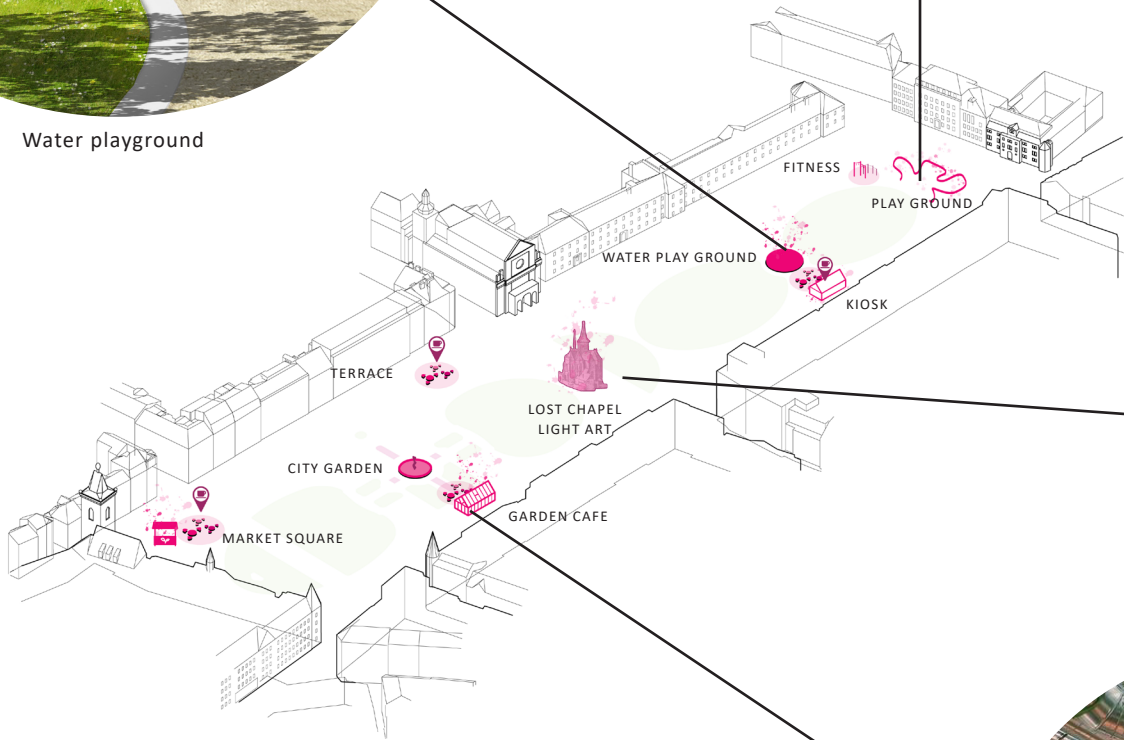
The design is flexible and durable; it is hardware able to accommodate a diversity of activities and users. The programming (the software) should be organised together by the city and the users. The diverse activities during day and evening, lighting, and the increased visibility and connection with the surroundings makes a safer space.



Water playground



Playground



Program attractions

Various attractions are positioned in the park such as play garden, fitness area, terraces, water play, fountains, lighting preformance of the chapel and space for market

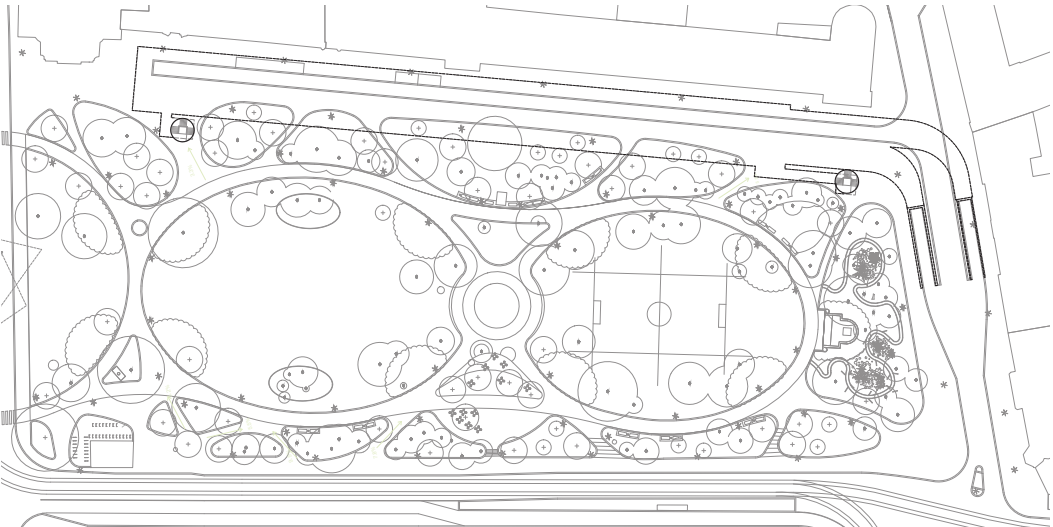


Glass house, café integrated, meeting point for the neighbourhood and used to store palm trees in winter.

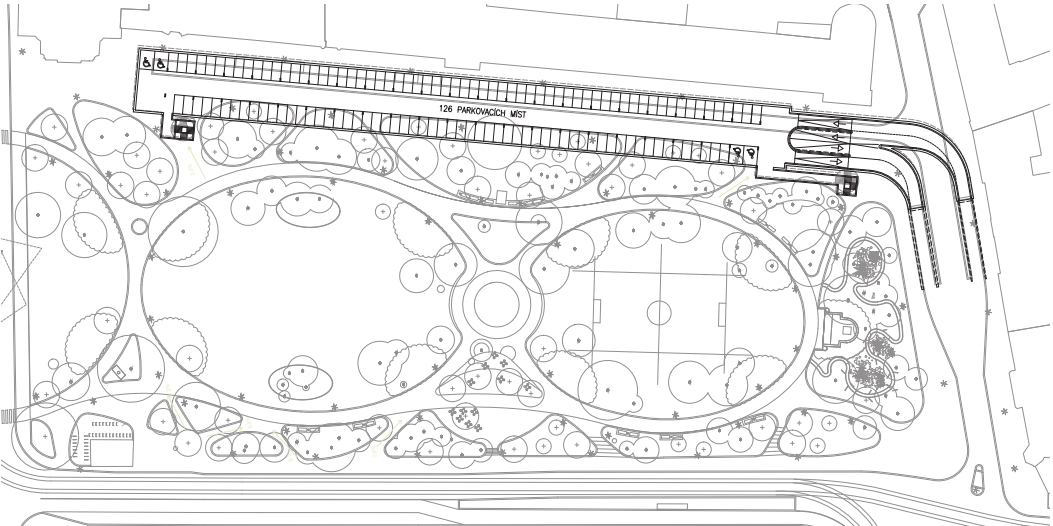


Lost Chapel light art installation, made by an artist e.g. Janet Echelman

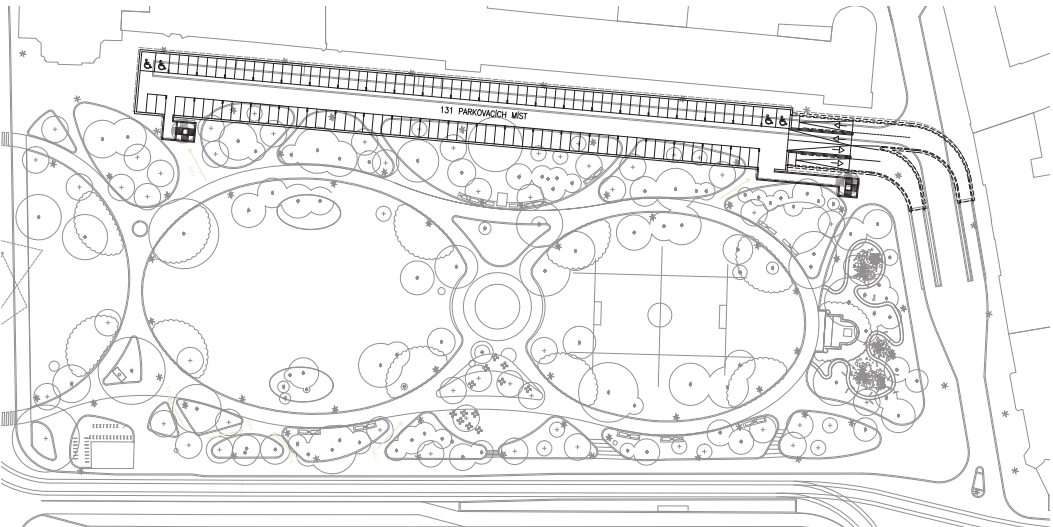
PARKING GARAGE LEVELS



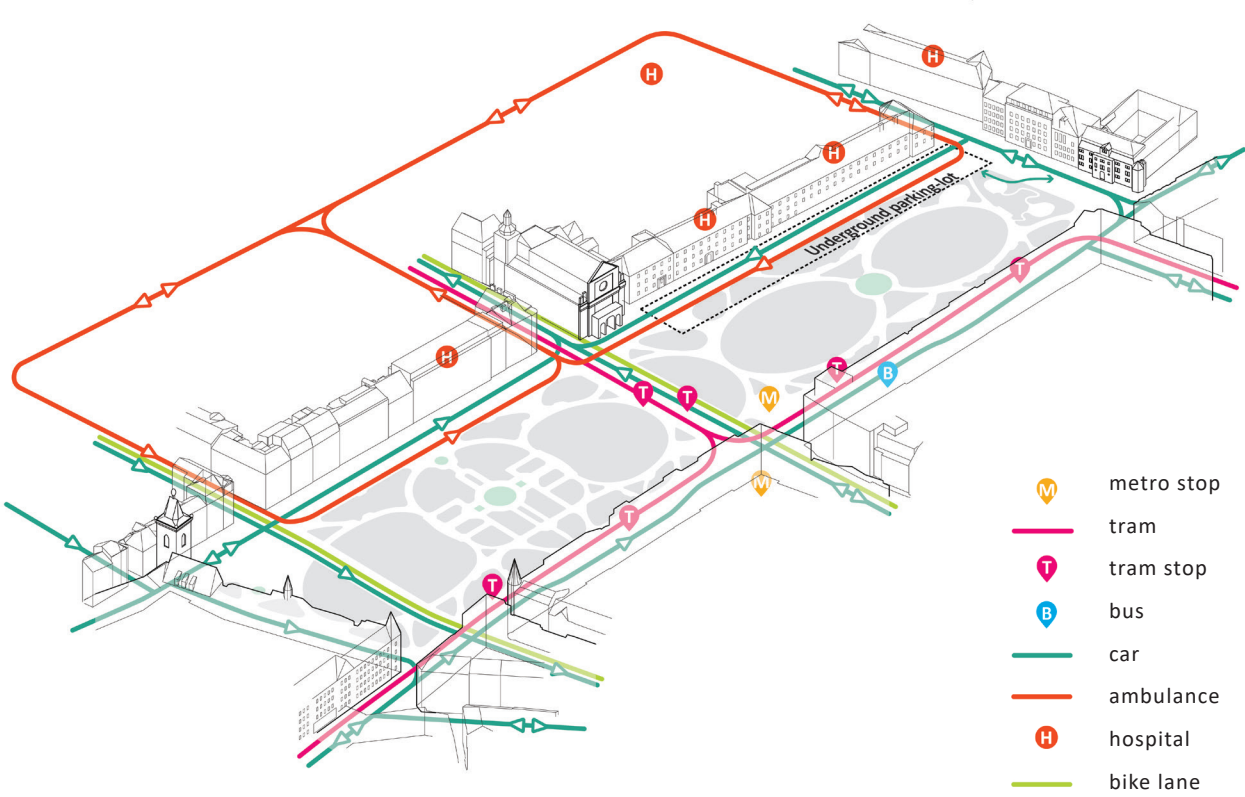
ENTRANCES ON THE SURFACE



1st UNDERGROUND LEVEL - VISITORS OF LOCAL INSTITUTIONS



2nd UNDERGROUND LEVEL - PARKING FOR LOCAL RESIDENTS



Traffic

In general, the current traffic system will be kept. However, the streets around Charles Square will have less traffic. Combined with an outstanding public transport, the streets are designed to be a shared space zone where the cars are guests and the pedestrians and bikers prevail.



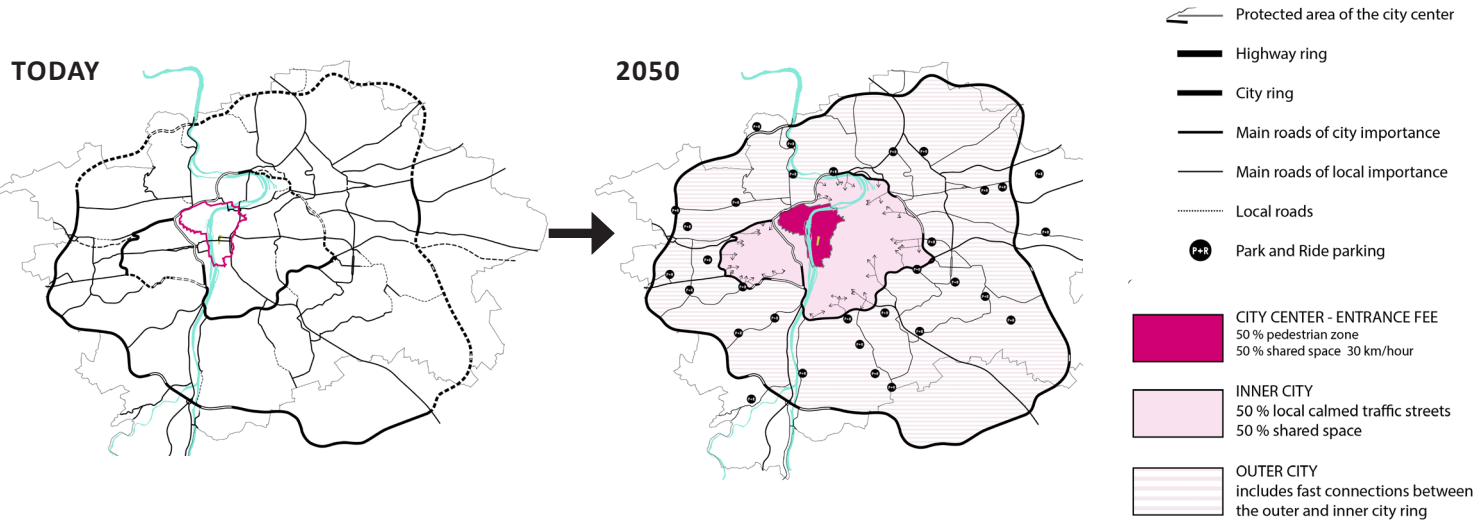
Impression of parking garage entrances in a historical city centre



green parking entrance

TRANSPORTATION IN CHARLES SQUARE

Buro Sant en Co | Atelier M1 | Promika

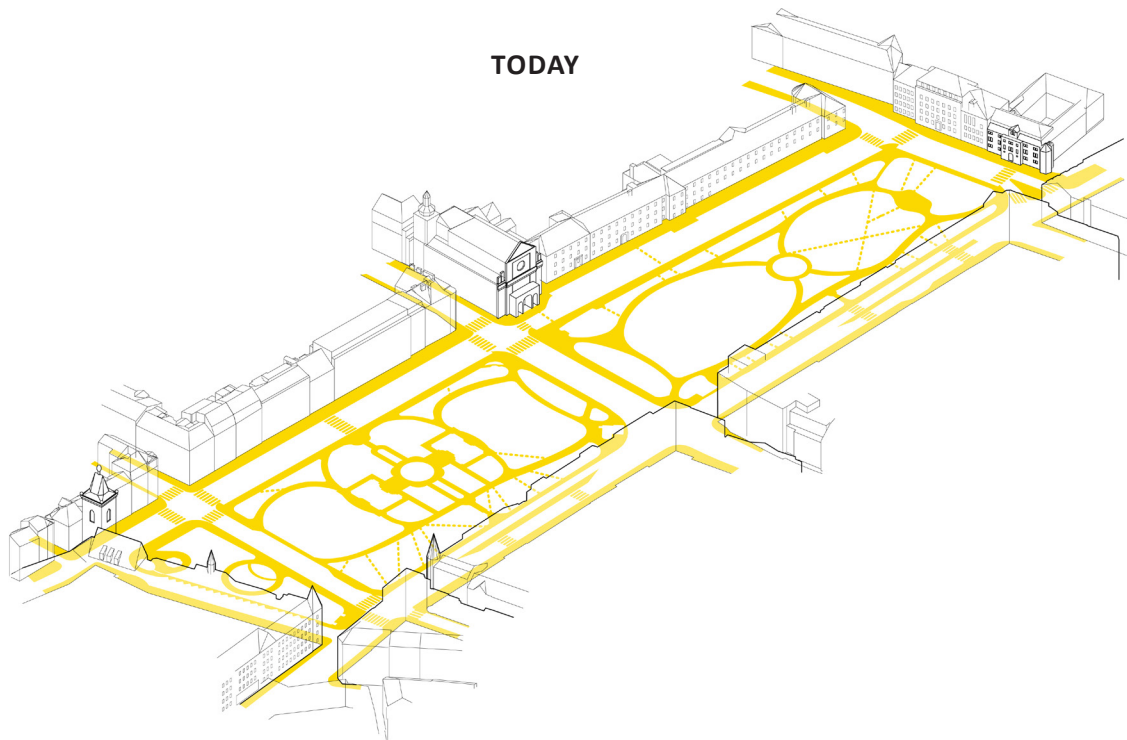


In the future the use of cars in Prague centre will substantially be reduced. With finalizing both traffic rings of Prague, the planned metro and train connections, P&R parkings and bike sharing centres, conditions are created to significantly reduce the cars in the city centre. Cars will be allowed in the limited accessible inner city, but mainly in shared space and calm streets without main shortcuts through the inner city.

On Charles Square the primacy is also on public traffic and pedestrians, the motorized traffic slowly decreases. Public transport, including stops, is kept as solved in Phase I. Charles Square remains an important connectivity point. For the pedestrians it is important to be able to walk smoothly from public transport stops through the park to their destination. For them a logical network of walking routes is created, using as much as possible Thomayer's lay out. The park will be extended, the sidewalks enlarged and transformed into broad pedestrian zones. Parked cars are removed from the surface and, only for directly involved, placed in underground parkings.

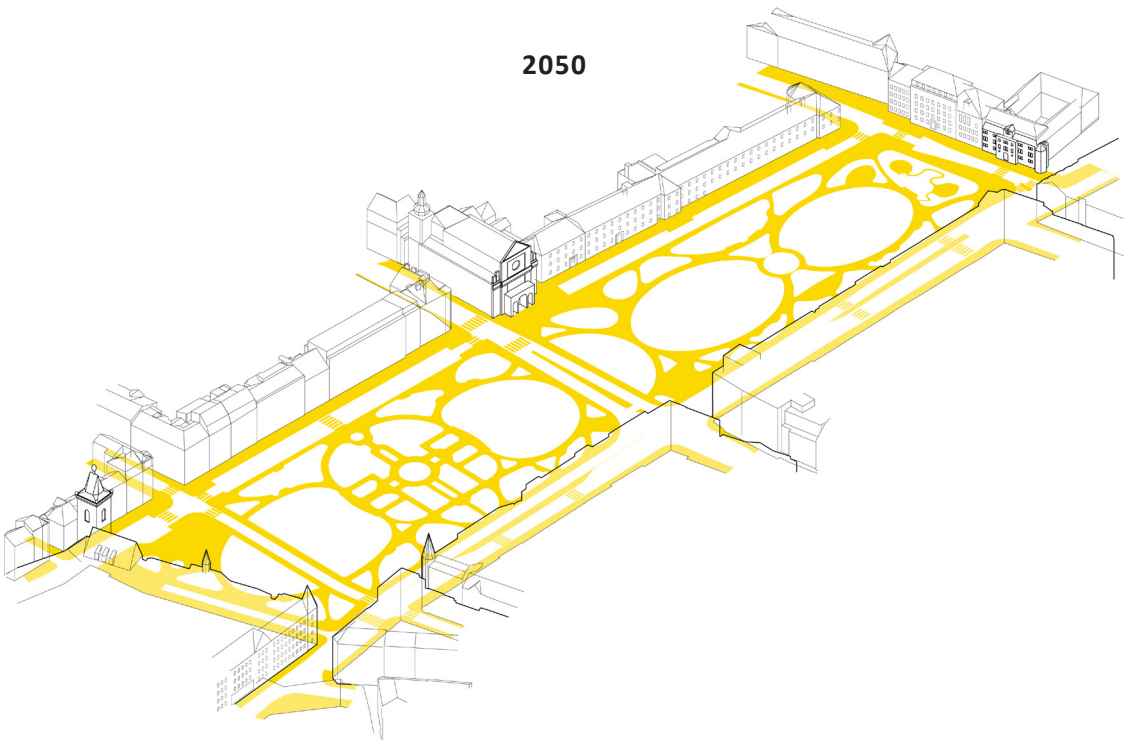
Towards a reduction of car traffic

The main traffic will be directed around the centre. With finalizing both traffic rings of Prague, the planned metro and train connections, P&R parkings and bike sharing centres, conditions are created to significantly reduce the cars in the city centre.



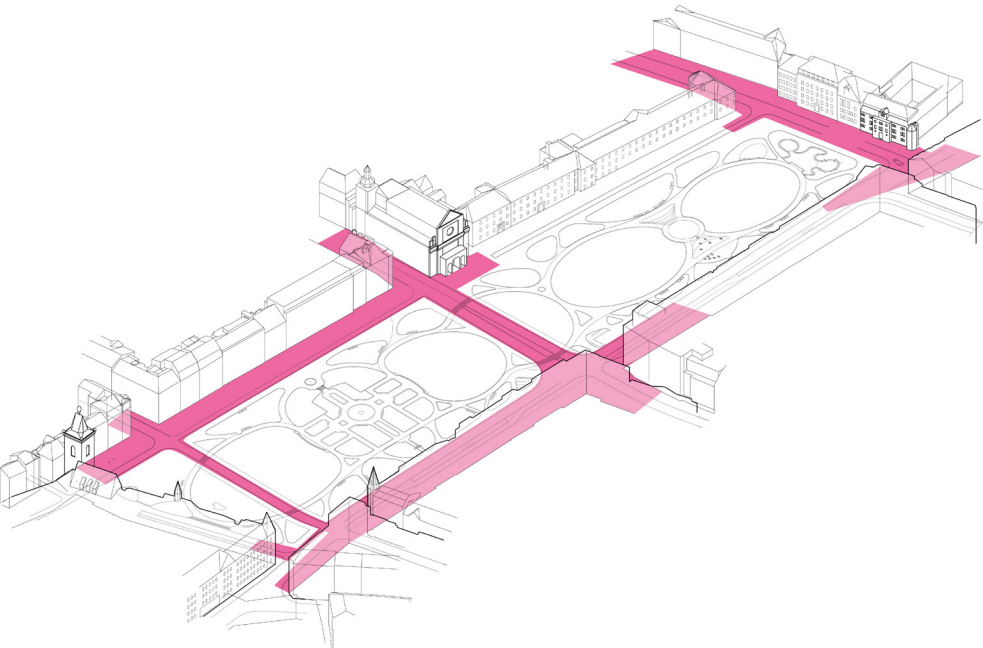
Pedestrian movement today

Nowadays people can not easily cross the park and therefore create paths of their own to reach their destination.



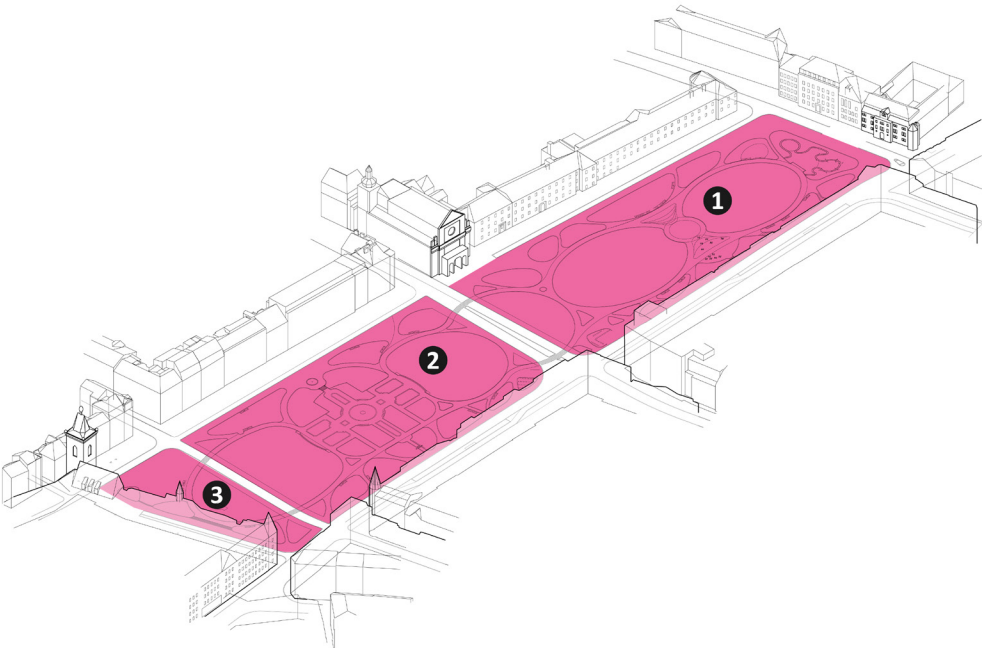
Fluent pedestrian flow

Paths in the park are adjusted and new paths are added through the mantle in order to make a fluent flow of pedestrians possible without damaging the lawns, scrubs and treeroots.



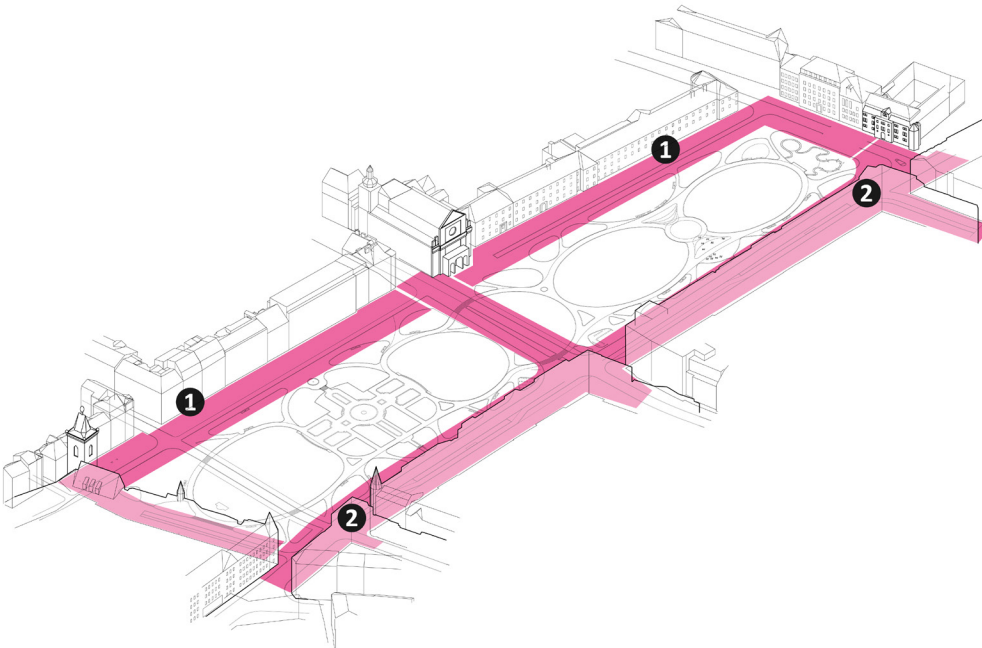
PHASE 1 | 2018-2019

Renewal of the streets around the park



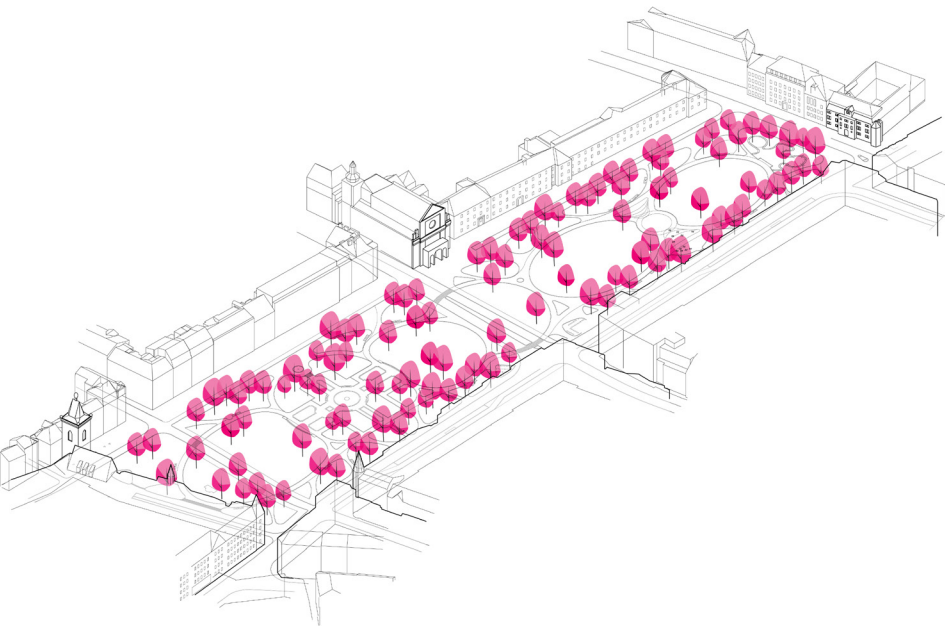
PHASE 2.1

Renewal of the park area divided in three steps: adjusting park paths, lawns, mantle and adding water management ingredients like water buffer, retention basin on the east side and changes in morfology.



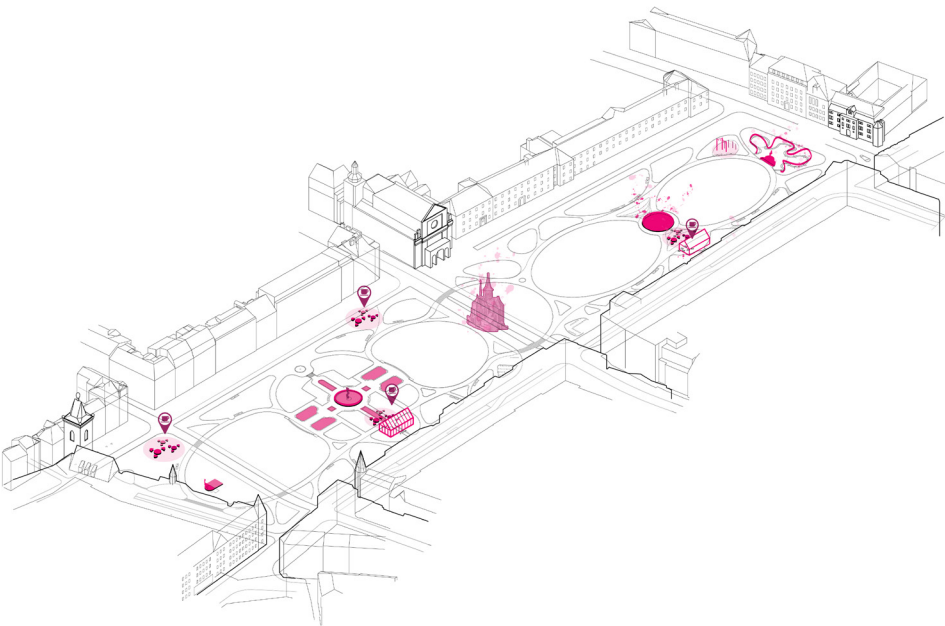
PHASE 3

Implementation of the parking garage in step 1, changing the streets on the east and north side into inner-city quality and adding the line of trees in the edge. The streets on the west and south side are changed in step 2.



PHASE 2.0 | START 2018

Improving growing conditions of the trees by improving the soil condition



PHASE 2.2

Adding program and attractions. This can be implemented in desired order.

PHASING OF THE REVITALIZATION OF CHARLES SQUARE

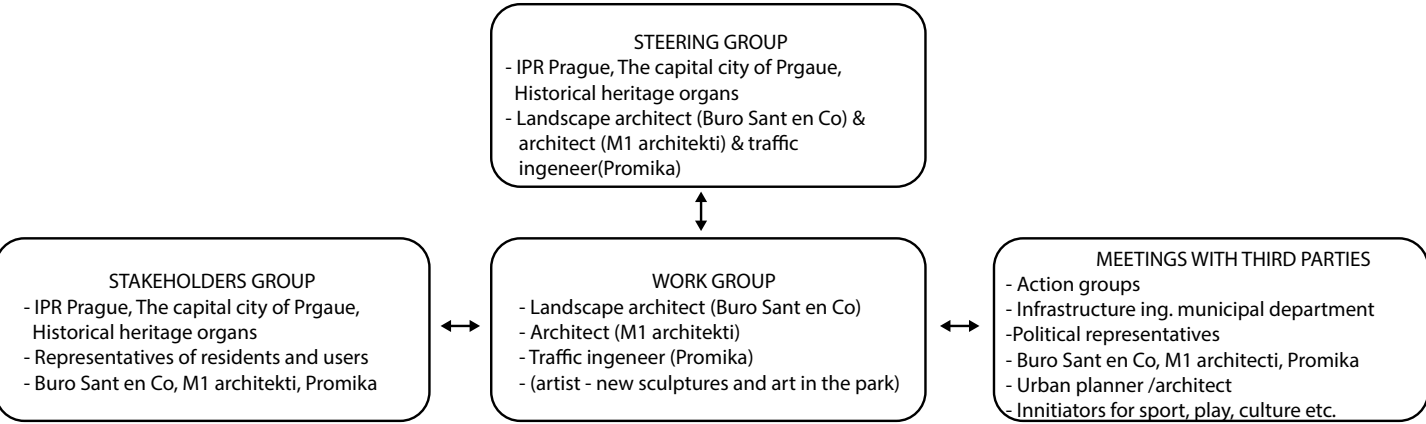
SANT EN CO / M1 ARCHITEKTI / PROMIKA

As the trees on Charles square are in a critical situation, immediate actions must improve the growing conditions of the trees, especially in the mantle. This means an improvement of the top soil layer, gravel drain lines enabling water infiltration in the green mantle, herbaceous planting under the trees and rain water ditches.

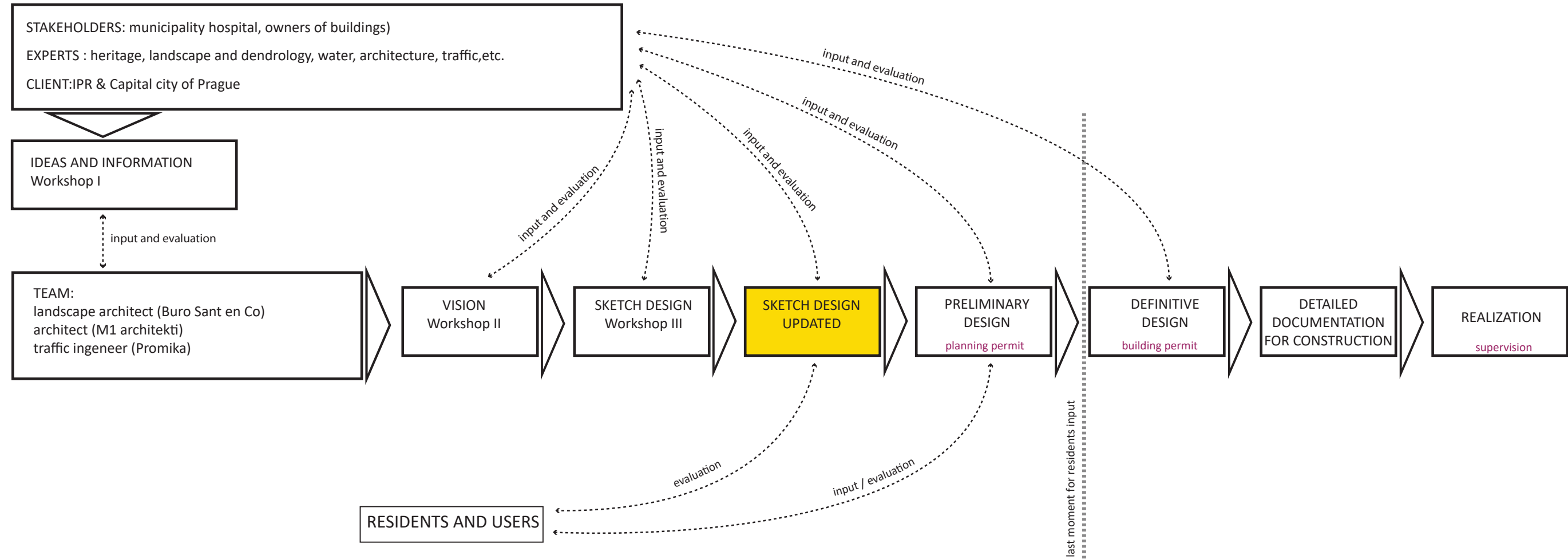
After this main adjustments to improve the overall water management need to be made: slight adjustments of the terrain and adjustments of the pedestrian structures to avoid further hardening of the top soil and heightening the paths to allow water infiltration in the lawns. Restoration of the paths, lawns and perforations of the mantle must be part of the first stage. This can be done gradually, part by part.

After creating this durable casco of the design, new art works, playgrounds and nodes restoration can be added. The parking garage can be implemented together with the design of the east streets.

It is important to start as soon as possible with creating a management plan both for maintenance and programming.



WORK GROUP DIAGRAM



PROCESS

2050



A-A'



B-B'

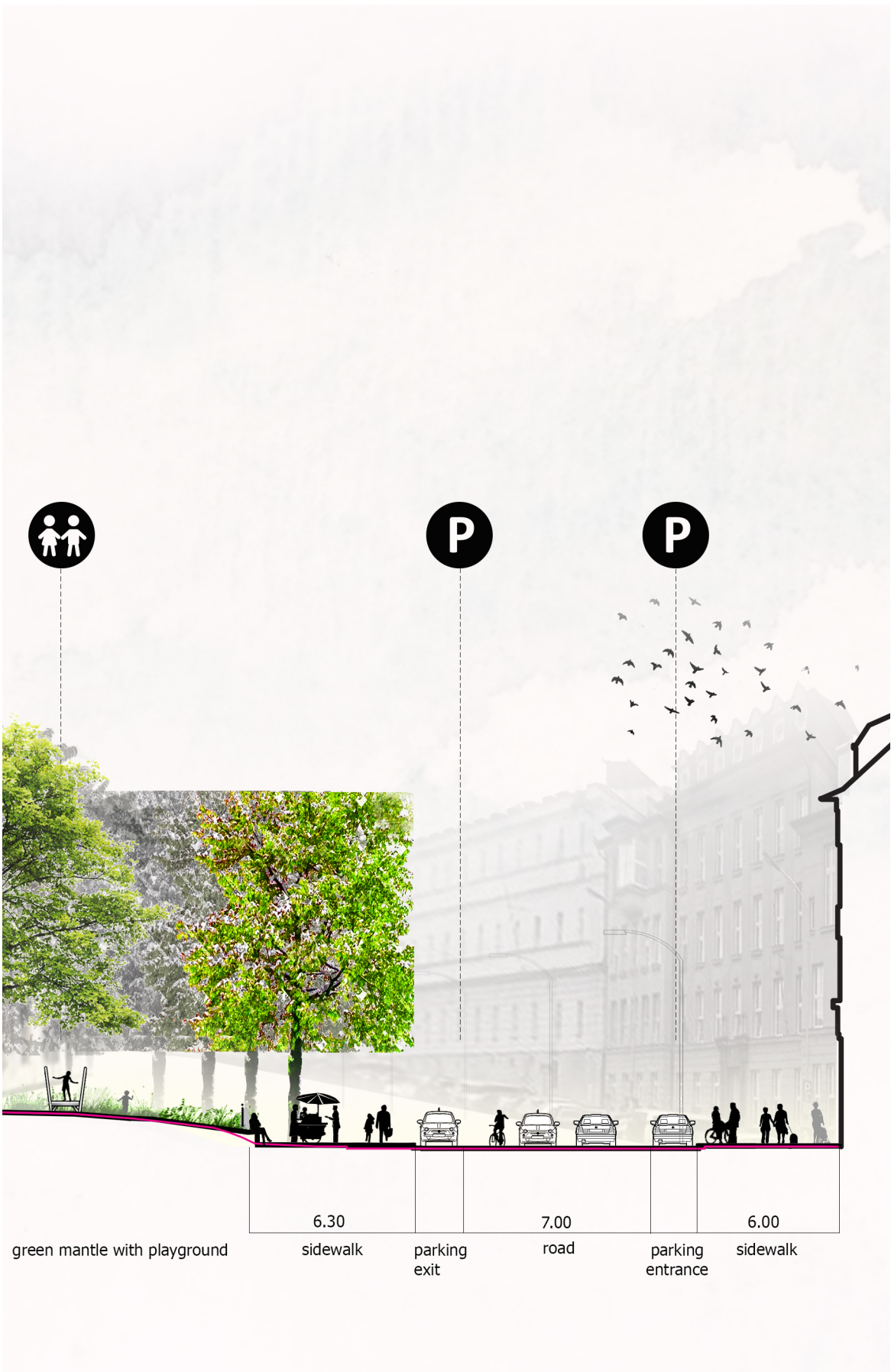
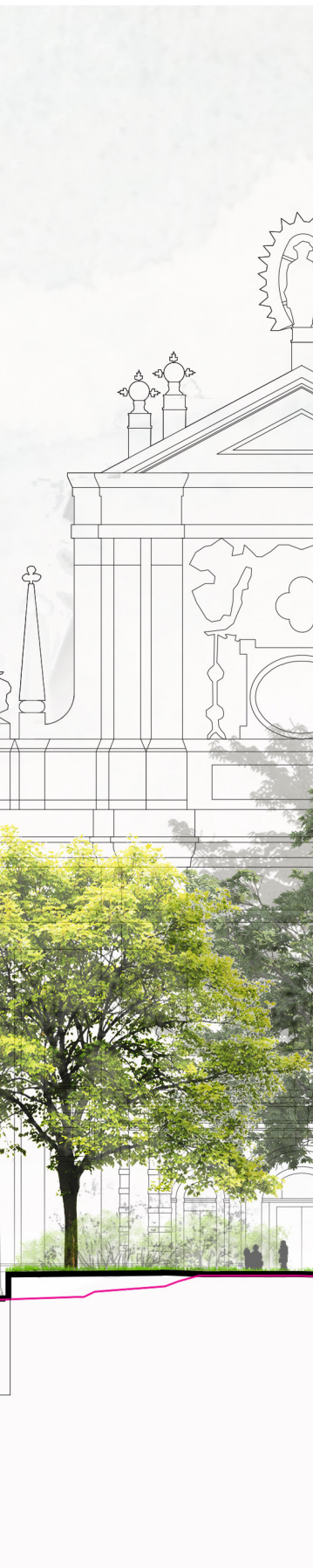


C-C'

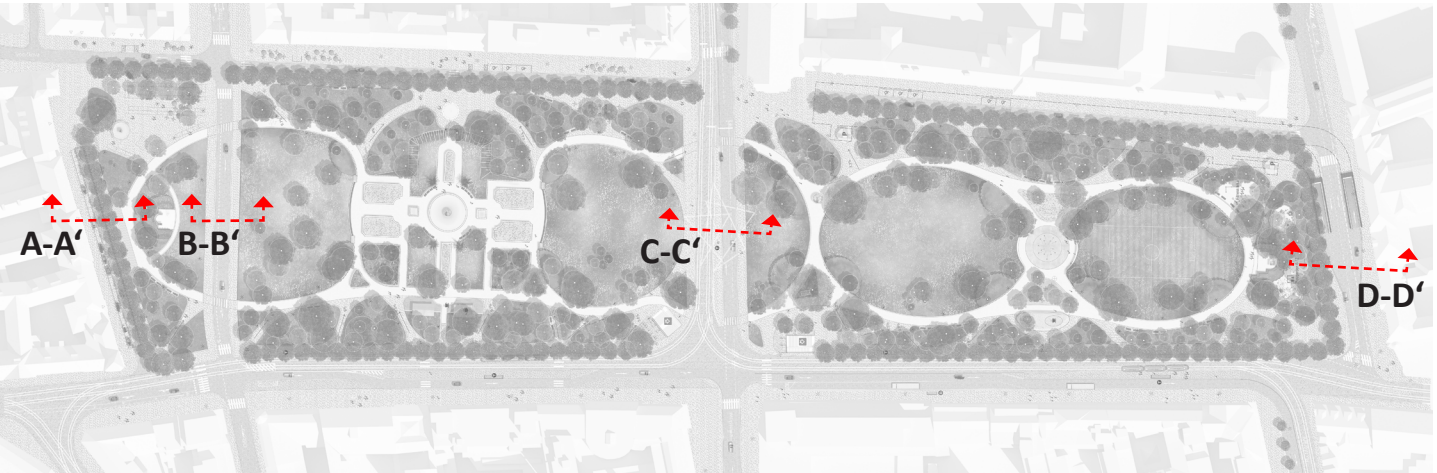
LONGITUDINAL SECTIONS A-A', B-B', C-C', D-D'

Buro Sant en Co | Atelier M1 | Promika

m 1:250



D-D'

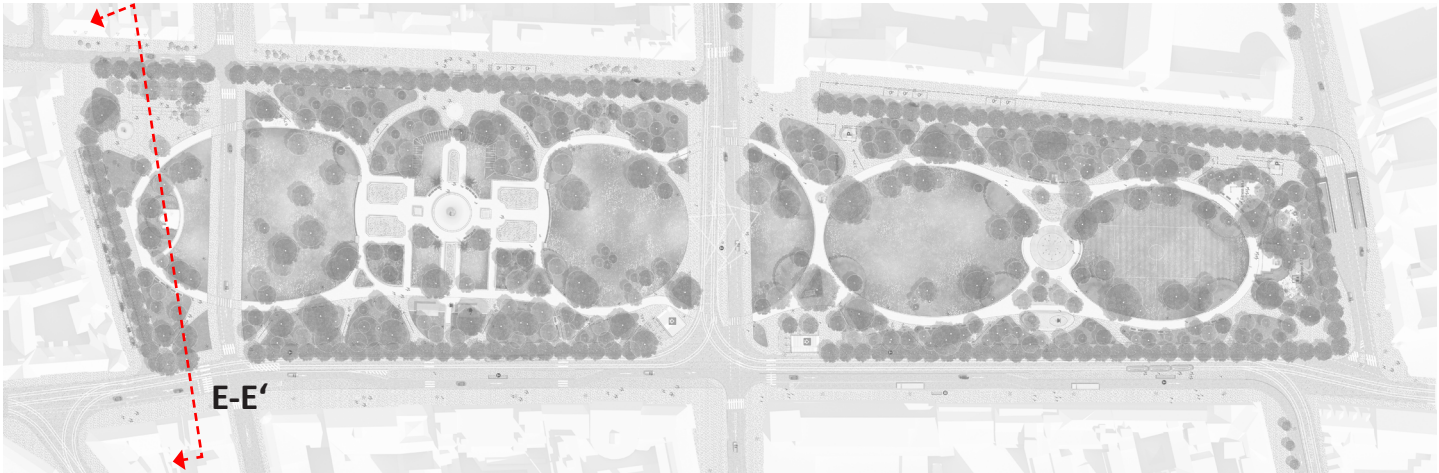


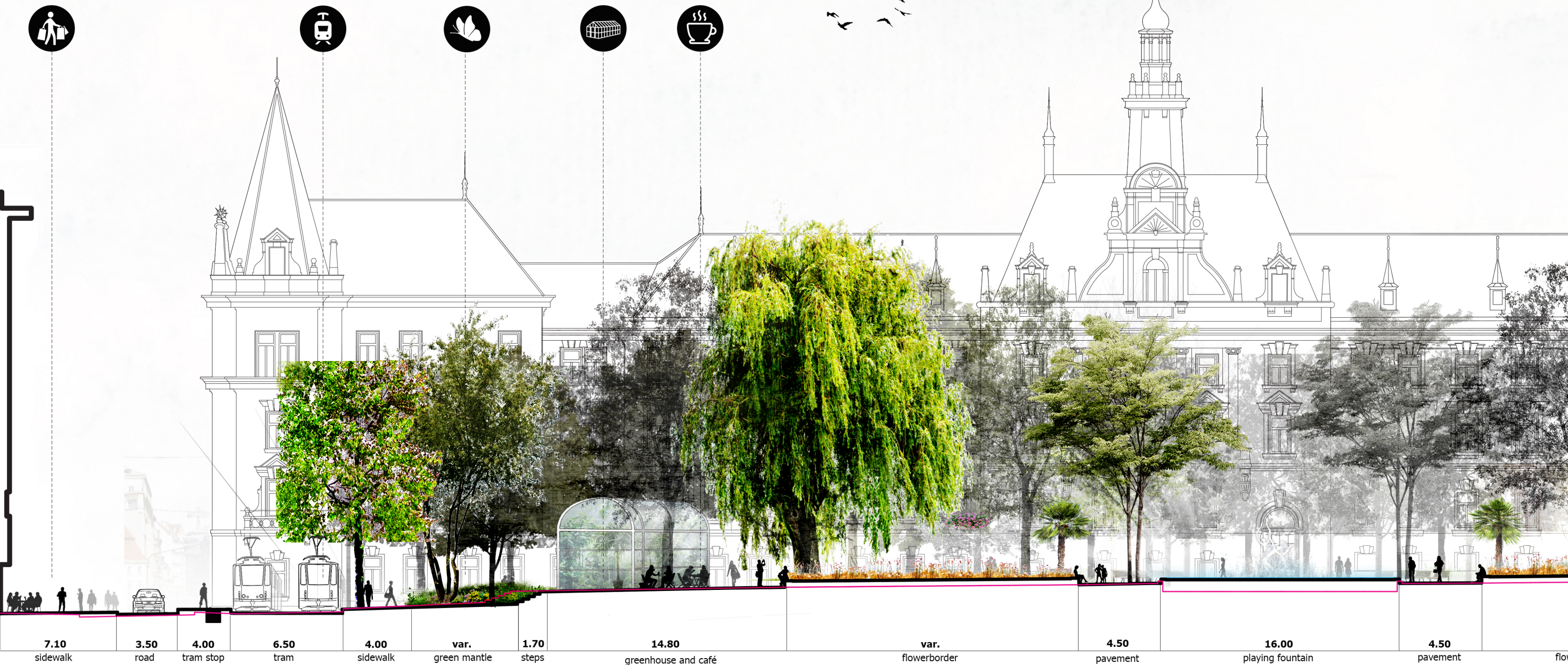


CROSS SECTION E-E'

Buro Sant en Co | Atelier M1 | Promika

m 1:250

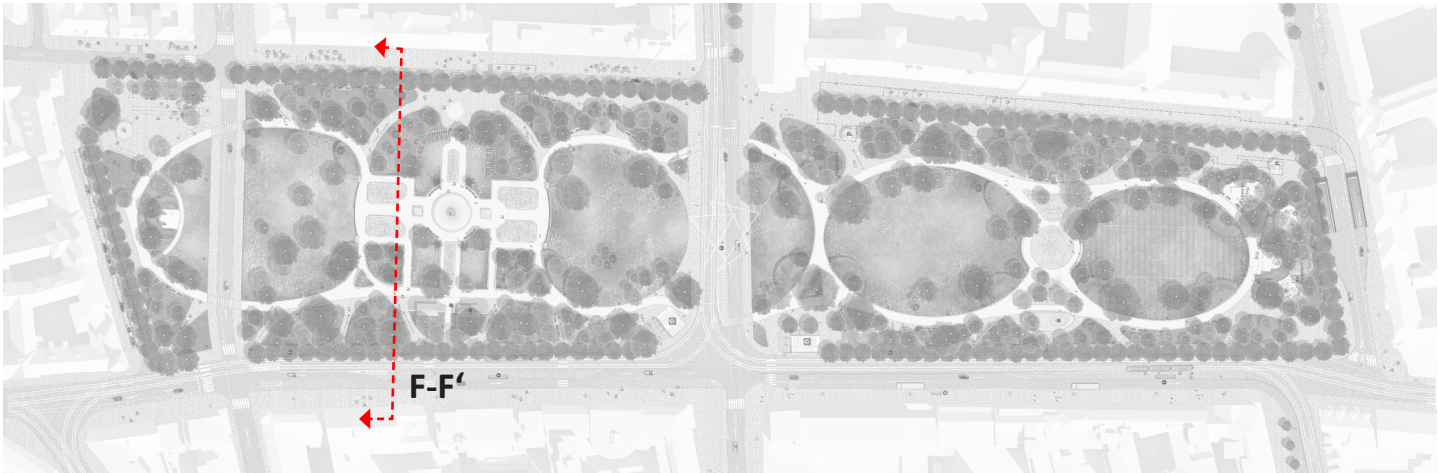




CROSS SECTION F-F'

Buro Sant en Co | Atelier M1 | Promika

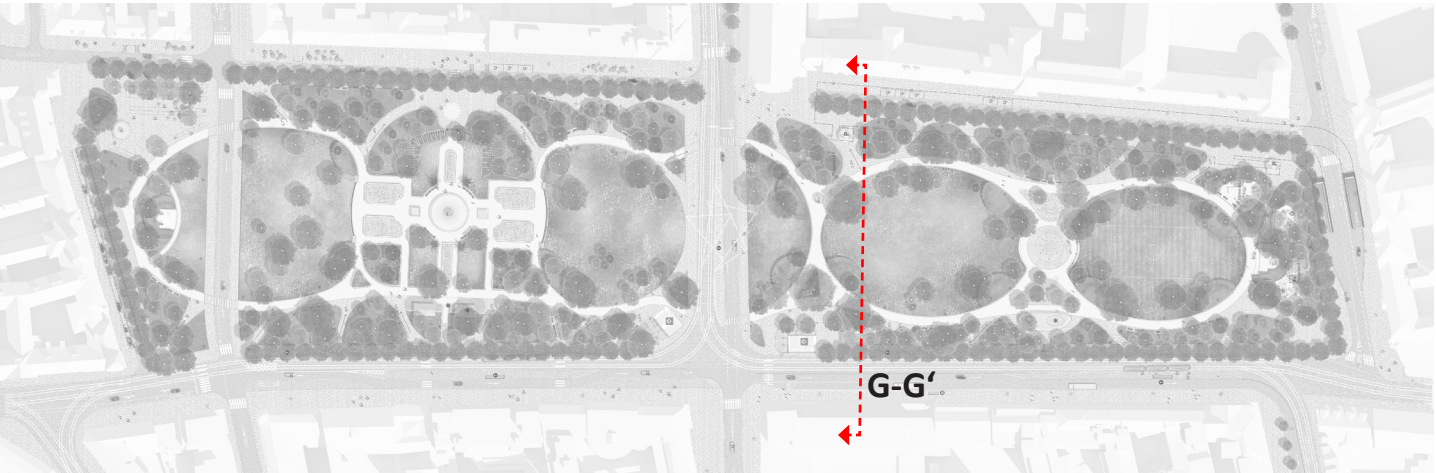
m 1:250





CROSS SECTION G-G’
Buro Sant en Co | Atelier M1 | Promika

m 1:250

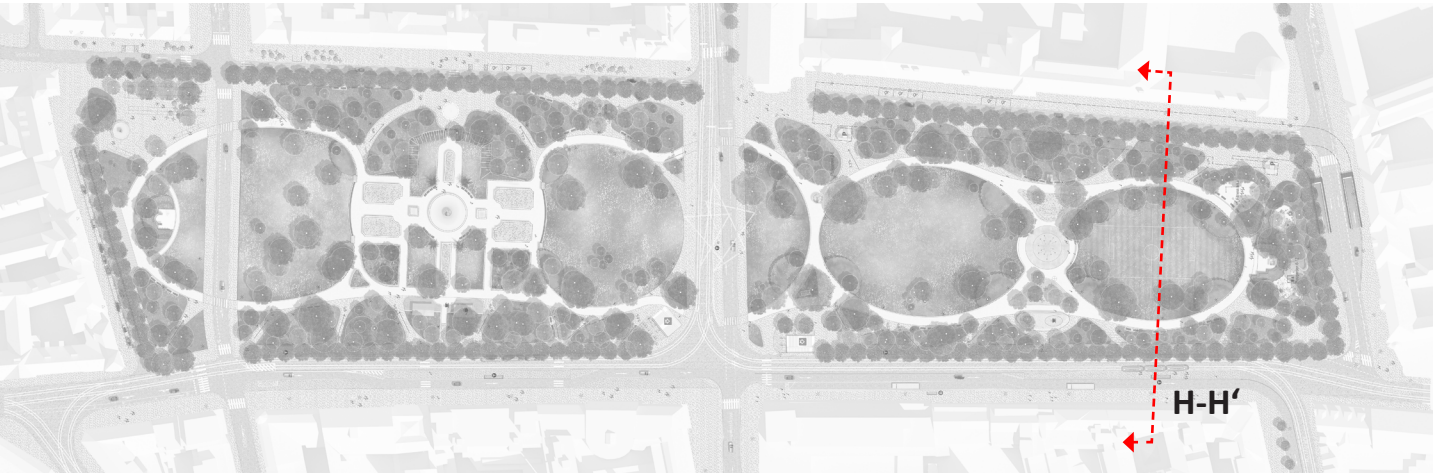




CROSS SECTION H-H'

Buro Sant en Co | Atelier M1 | Promika

m 1:250





LANDSCAPING DESIGN OF THE PARK 2025

SANT EN CO / M1 ARCHITEKTI / PROMIKA

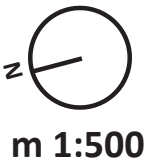


Planting

-  Existing tree
-  New trees
-  Removed tree
-  Perrenial flowerbed
-  Compact low flowering shrubs in the garden
-  Compact high groups of shrubs
-  Mantle natural-like undergrowts with solitary transparent shrubs
-  Lawn

LANDSCAPING DESIGN OF THE PARK 2050

Buro Sant en Co | Atelier M1 | Promika



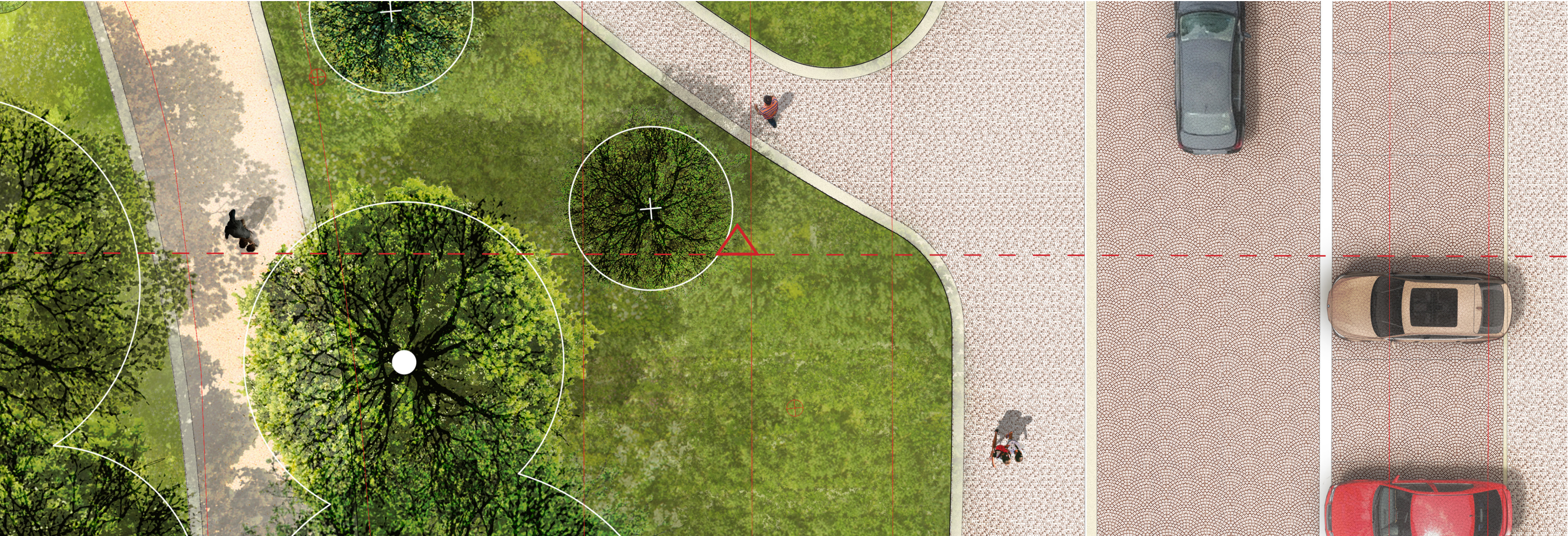
The mantle. Undergrowth of shadow natural-looking planting. with solitary shrubs of a multistem umbrella-like transparent structure (e.g. *Syringa vulgaris* or *Corylus avellana*). Native species are used to restore the mantle tree structure.



Focal points. Perennial mix with natural balance between the plants (low maintenance demands). The plants are not grouped but re-occur in the whole surface. The large diversity attracts bees, butterflies, etc. and improves the biodiversity. Use of deep rooted species, more resilient to drought.



Park landscape interior. Solitary park trees, use of Thomayer’s species. Compact groups of flowering shrubs.



SECTION AND PLAN DETAIL 1

Buro Sant en Co | Atelier M1 | Promika



Pavement on Charles Square

We propose to link Charles Square to the inner-city. In our vision we change the streets to one level with Prague mosaic on the sidewalk and rough stones on the road with natural stone curbs on the side.



Granite paving road pavement, 10 x 10 stones



'Cat backs' are used for the tram area.



Inner-city pavement

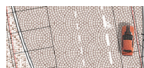


Prague mozaic for pedestrian zones: inner-city quality

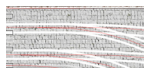
Pavement



City carpet sidewalks, lime stone 5 x 5 cm, mix Prague standard



Road, granite stone 10 x 10cm, mix Prague standard

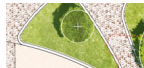


Tram road, natural stone variable x 20 x 12 cm, 'Cat backs' Prague standard

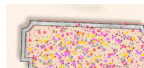


Historic park self binding gravel path (mlatová cesta), grey/yellow colour

Curbs/ walls / edges/ stairs



Curb, sand stone edge of the park paths, flat, 30 cm wide



Curb, sand stone edge of the park paths, lifted to sitting height, 50 cm wide



Metal edge between melt park path and stone paving



Stairs, metal edge and lime stone paving 5 x 5 cm

Furniture



Classical bench - renewed Charles square type bench



Monumental stone bench with wooden seat in the garden



Bicycle stands



Playground



Fitness



Lamp post

Planting



Existing tree



New trees



Removed tree



Perrenial flowerbed



Compact low flowering shrubs in the garden



Compact high groups of shrubs



Mantle natural-like undergrowths with solitary transparent shrubs

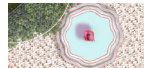


Lawn

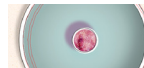


Reinforced gravel lawn for sportfield

Water elements



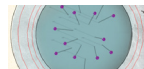
Historic baroque water fountain



Renewed water fountain

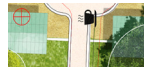


Small scale water elements



Water jets play square

Small architecture



Glasshouse - café and gardeners place

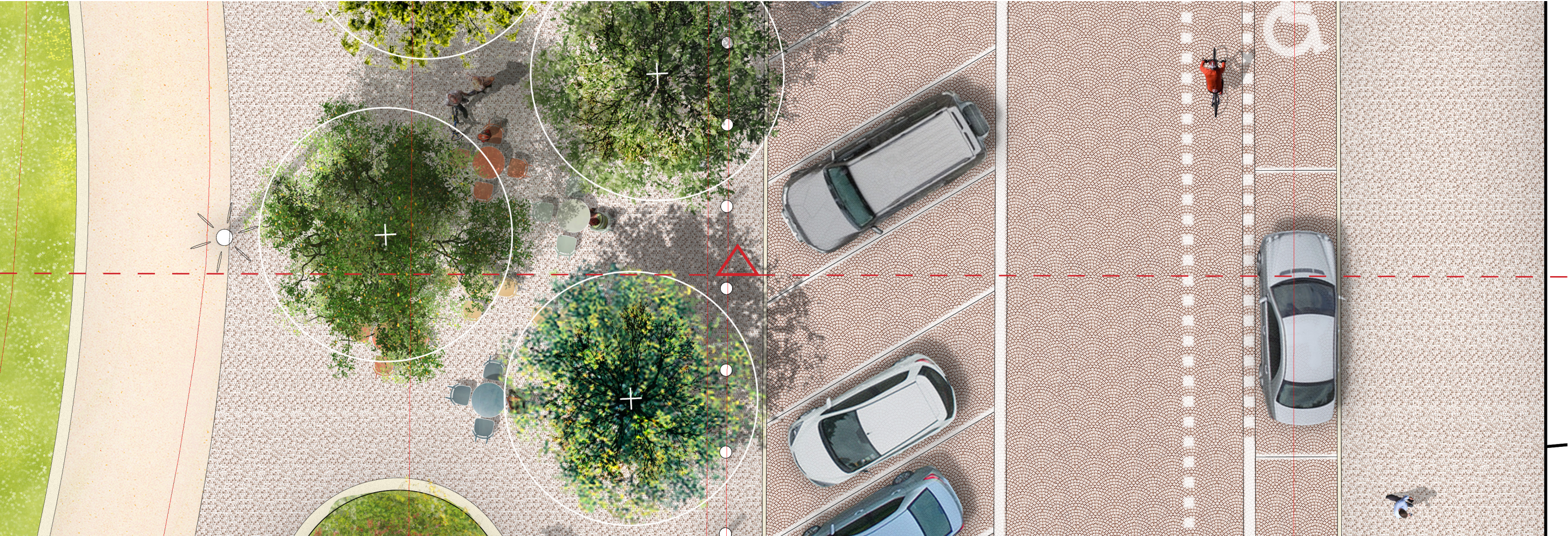


Kiosk



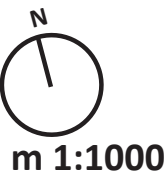
Parkin garage pedestrian entrance





SECTION AND PLAN DETAIL 2

Buro Sant en Co | Atelier M1 | Promika



Pavement

- City carpet sidewalks, lime stone 5 x 5 cm, mix Prague standard
- Road, granite stone 10 x 10cm, mix Prague standard
- Tram road, natural stone variable x 20 x 12 cm, 'Cat backs' Prague standard
- Historic park self binding gravel path (mlatová cesta), grey/yellow colour

Curbs/ walls / edges/ stairs

- Curb, sand stone edge of the park paths, flat, 30 cm wide
- Curb, sand stone edge of the park paths, lifted to sitting height, 50 cm wide
- Metal edge between melt park path and stone paving
- Stairs, metal edge and lime stone paving 5 x 5 cm

Furniture

- Classical bench - renewed Charles square type bench
- Monumental stone bench with wooden seat in the garden
- Bicycle stands
- Playground
- Fitness
- Lamp post

Planting

- Existing tree
- New trees
- Removed tree
- Perrenial flowerbed
- Compact low flowering shrubs in the garden
- Compact high groups of shrubs
- Mantle natural-like undergrowths with solitary transparent shrubs
- Lawn
- Reinforced gravel lawn for sportfield

Water elements

- Historic baroque water fountain
- Renewed water fountain
- Small scale water elements
- Water jets play square

Small architecture

- Glasshouse - café and gardeners place
- Kiosk
- Parkin garage pedestrian entrance

Terraces

On Charles Square terraces are located on several spots. Standard light style furniture is used.

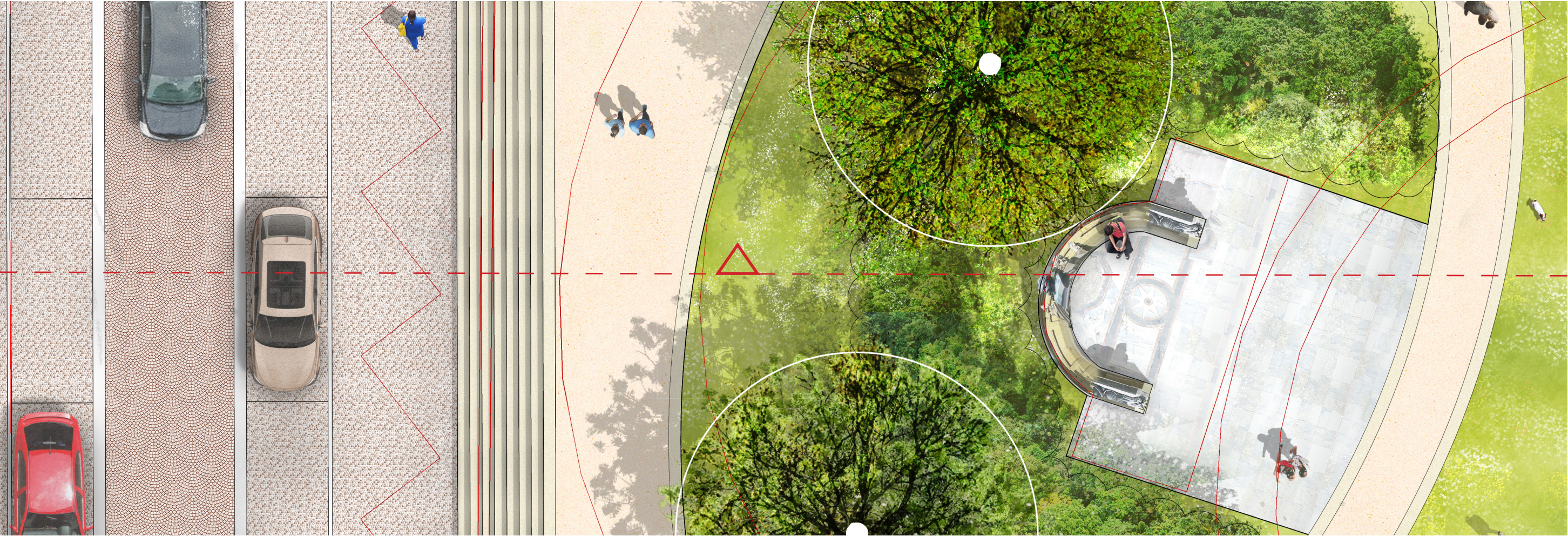
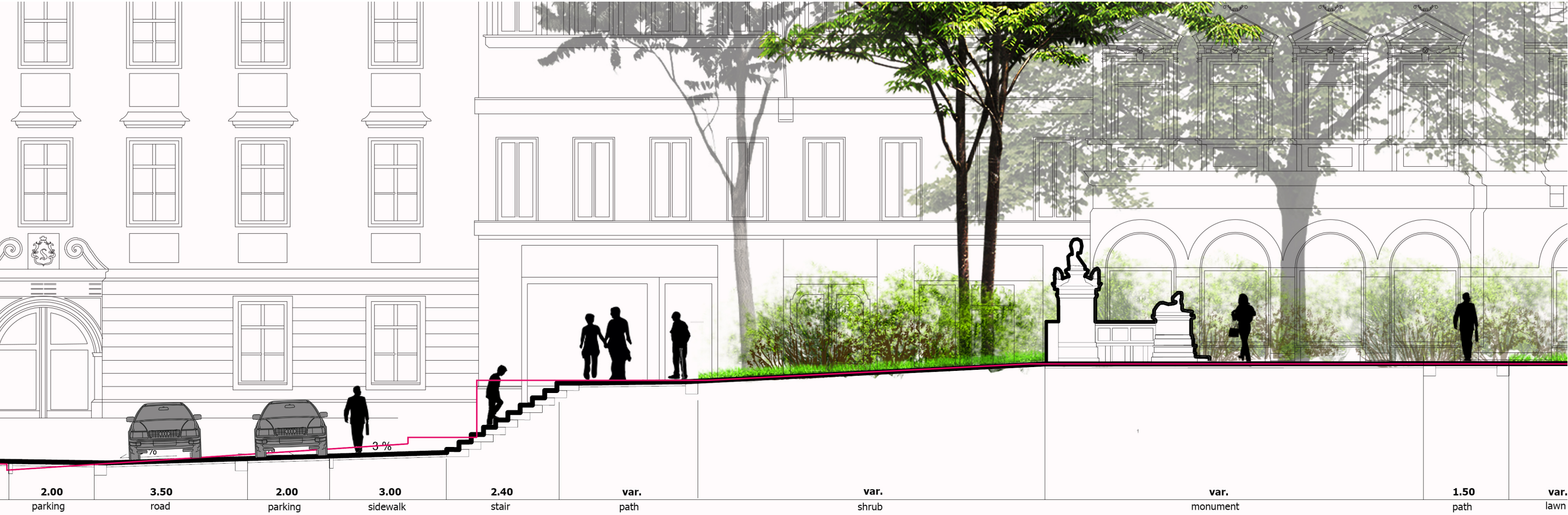


Typical Prague terrace furniture



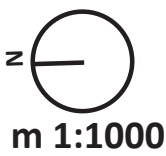
Typical Prague terrace





SECTION AND PLAN DETAIL 3

Buro Sant en Co | Atelier M1 | Promika



Pavement

- City carpet sidewalks, lime stone 5 x 5 cm, mix Prague standard
- Road, granite stone 10 x 10cm, mix Prague standard
- Tram road, natural stone variable x 20 x 12 cm, 'Cat backs' Prague standard
- Historic park self binding gravel path (mlatová cesta), grey/yellow colour

Curbs/ walls / edges/ stairs

- Curb, sand stone edge of the park paths, flat, 30 cm wide
- Curb, sand stone edge of the park paths, lifted to sitting height, 50 cm wide
- Metal edge between melt park path and stone paving
- Stairs, metal edge and lime stone paving 5 x 5 cm

Furniture

- Classical bench - renewed Charles square type bench
- Monumental stone bench with wooden seat in the garden
- Bicycle stands
- Playground
- Fitness
- Lamp post

Planting

- Existing tree
- New trees
- Removed tree
- Perrenial flowerbed
- Compact low flowering shrubs in the garden
- Compact high groups of shrubs
- Mantle natural-like undergrowths with solitary transparent shrubs
- Lawn
- Reinforced gravel lawn for sportfield

Water elements

- Historic baroque water fountain
- Renewed water fountain
- Small scale water elements
- Water jets play square

Small architecture

- Glasshouse - café and gardeners place
- Kiosk
- Parkin garage pedestrian entrance



Stairs and curbs

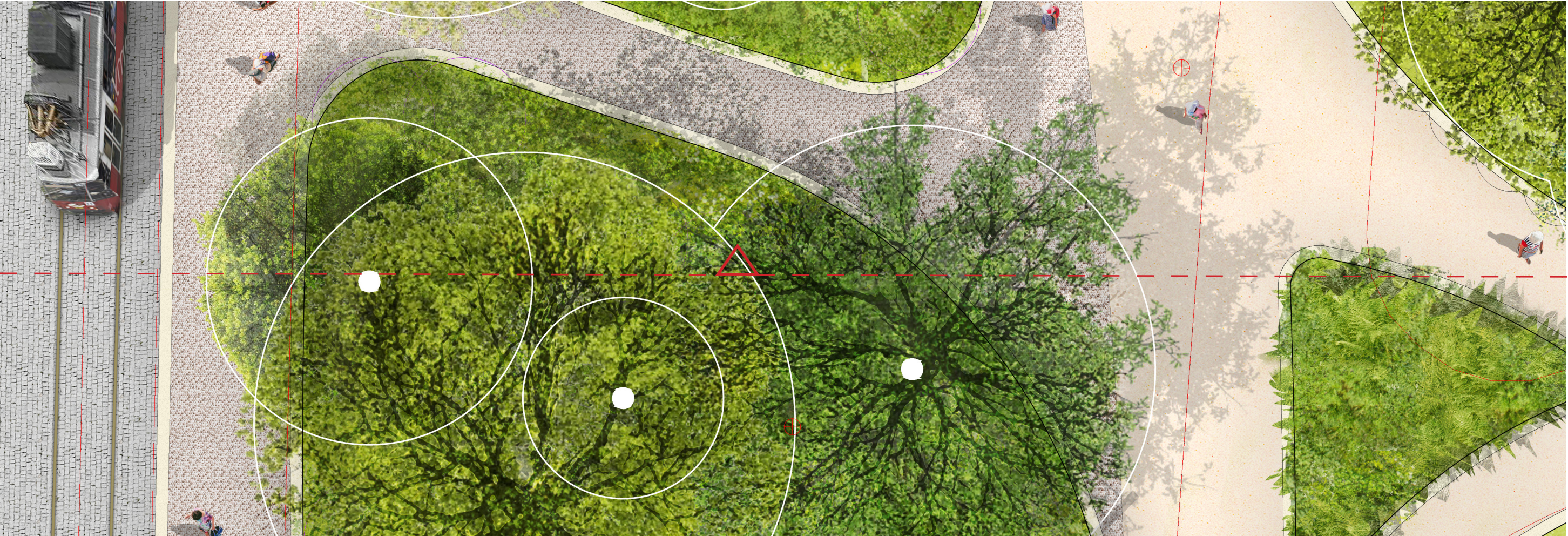
All the curbs and stairs are made of local sand stone, as light colored as possible, to create a beautiful line in the park. The material is made rough to prevent slipping. At stairs attention markings are added.



Sand stone curbs are used for the mantle and lawns and are leveled with the paths



Local sand stone



SECTION AND PLAN DETAIL 4

Buro Sant en Co | Atelier M1 | Promika



Park furniture

The furniture of Charles Square will have one recognisable style and color, referring to the history of the square. The lantern poles refer to the historical poles and the benches are remade to fit the historical benches. The furniture will be produced in a color close to black, which will give the furniture a chiq and reserved expression. This color is applied also on the standard Prague furniture.



Typical Charles Square bench

Historical lamp pole with LED armature



Prague city furniture

Pavement

- City carpet sidewalks, lime stone 5 x 5 cm, mix Prague standard
- Road, granite stone 10 x 10cm, mix Prague standard
- Tram road, natural stone variable x 20 x 12 cm, 'Cat backs' Prague standard
- Historic park self binding gravel path (mlatová cesta), grey/yellow colour

Curbs/ walls / edges/ stairs

- Curb, sand stone edge of the park paths, flat, 30 cm wide
- Curb, sand stone edge of the park paths, lifted to sitting height, 50 cm wide
- Metal edge between melt park path and stone paving
- Stairs, metal edge and lime stone paving 5 x 5 cm

Furniture

- Classical bench - renewed Charles square type bench
- Monumental stone bench with wooden seat in the garden
- Bicycle stands
- Playground
- Fitness
- Lamp post

Planting

- Existing tree
- New trees
- Removed tree
- Perrenial flowerbed
- Compact low flowering shrubs in the garden
- Compact high groups of shrubs
- Mantle natural-like undergrowths with solitary transparent shrubs
- Lawn
- Reinforced gravel lawn for sportfield

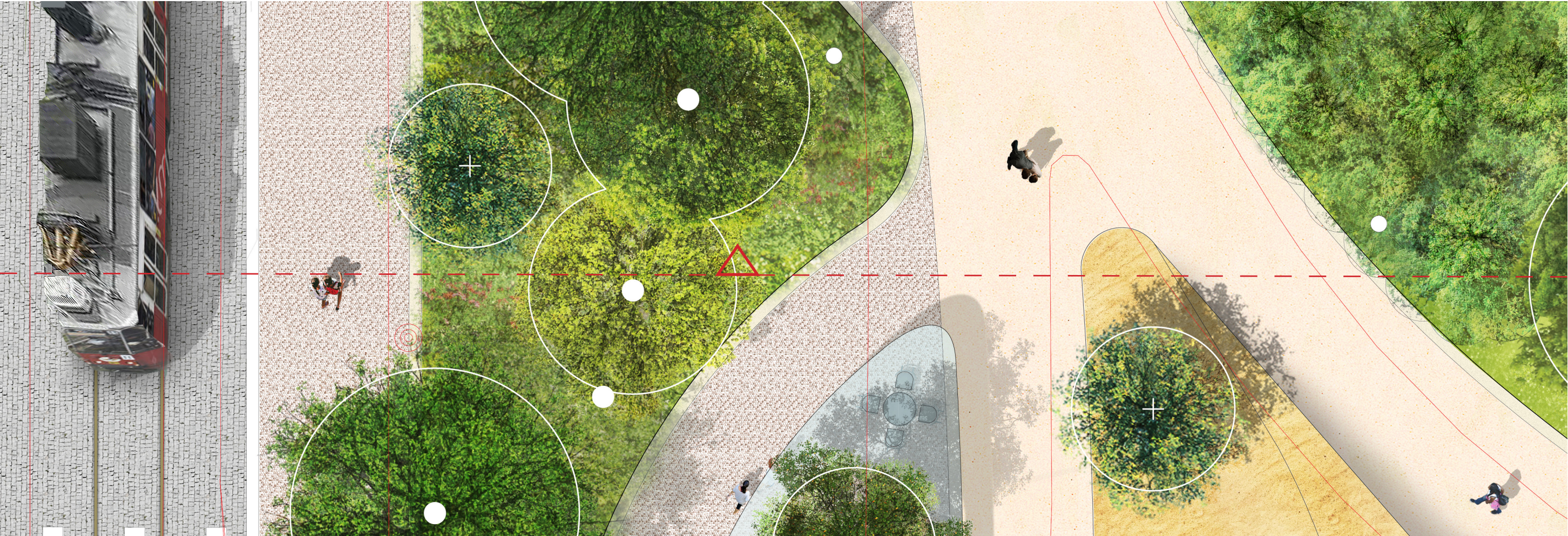
Water elements

- Historic baroque water fountain
- Renewed water fountain
- Small scale water elements
- Water jets play square

Small architecture

- Glasshouse - café and gardeners place
- Kiosk
- Parkin garage pedestrian entrance





SECTION AND PLAN DETAIL 5

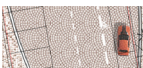
Buro Sant en Co | Atelier M1 | Promika



Pavement



City carpet sidewalks, lime stone 5 x 5 cm, mix Prague standard



Road, granite stone 10 x 10cm, mix Prague standard

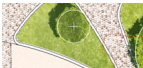


Tram road, natural stone variable x 20 x 12 cm, 'Cat backs' Prague standard

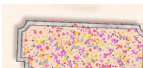


Historic park self binding gravel path (mlatová cesta), grey/yellow colour

Curbs/ walls / edges/ stairs



Curb, sand stone edge of the park paths, flat, 30 cm wide



Curb, sand stone edge of the park paths, lifted to sitting height, 50 cm wide



Metal edge between melt park path and stone paving



Stairs, metal edge and lime stone paving 5 x 5 cm

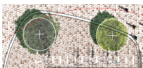
Furniture



Classical bench - renewed Charles square type bench



Monumental stone bench with wooden seat in the garden



Bicycle stands



Playground

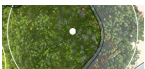


Fitness



Lamp post

Planting



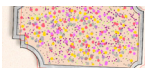
Existing tree



New trees



Removed tree



Perennial flowerbed



Compact low flowering shrubs in the garden



Compact high groups of shrubs



Mantle natural-like undergrowths with solitary transparent shrubs

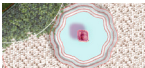


Lawn

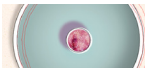


Reinforced gravel lawn for sportfield

Water elements



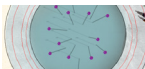
Historic baroque water fountain



Renewed water fountain

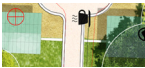


Small scale water elements



Water jets play square

Small architecture



Glasshouse - café and gardeners place



Kiosk



Parkin garage pedestrian entrance



Park pavement

In the heart of the park, where the design of Thomayer is restored, self binding gravel paths are proposed (mlatová cesta), grey/yellow colour.



self binding gravel path (mlatová cesta), grey/yellow colour.



Edged with a wide curb of light sand stone



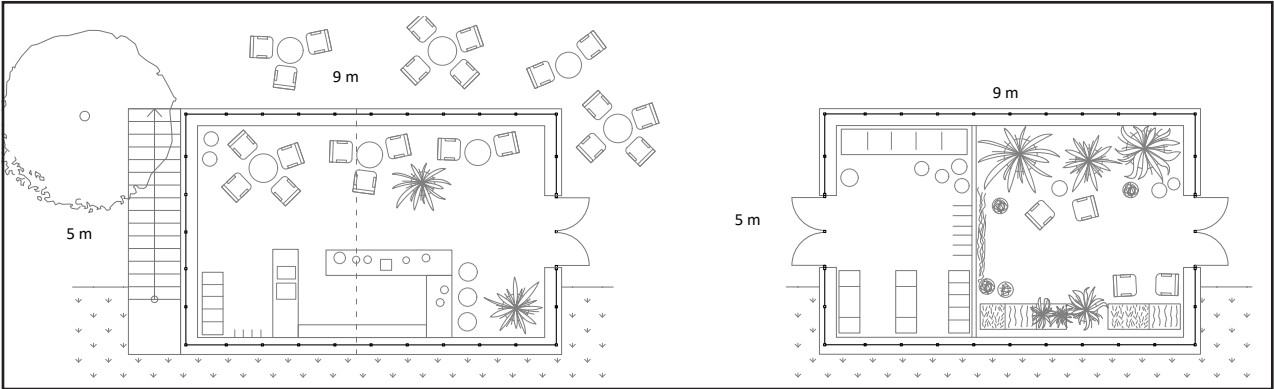
collage of the glass house 1



reference glass house Commissary hotel



reference glass house Commissary hotel



The glass house is made in two parts, one as café with toilets in the basement and the other as garden house for palms and gardeners space



The park kiosk 2 is situated in the southern part of the park. Café and toilets are placed under the subtle roof.



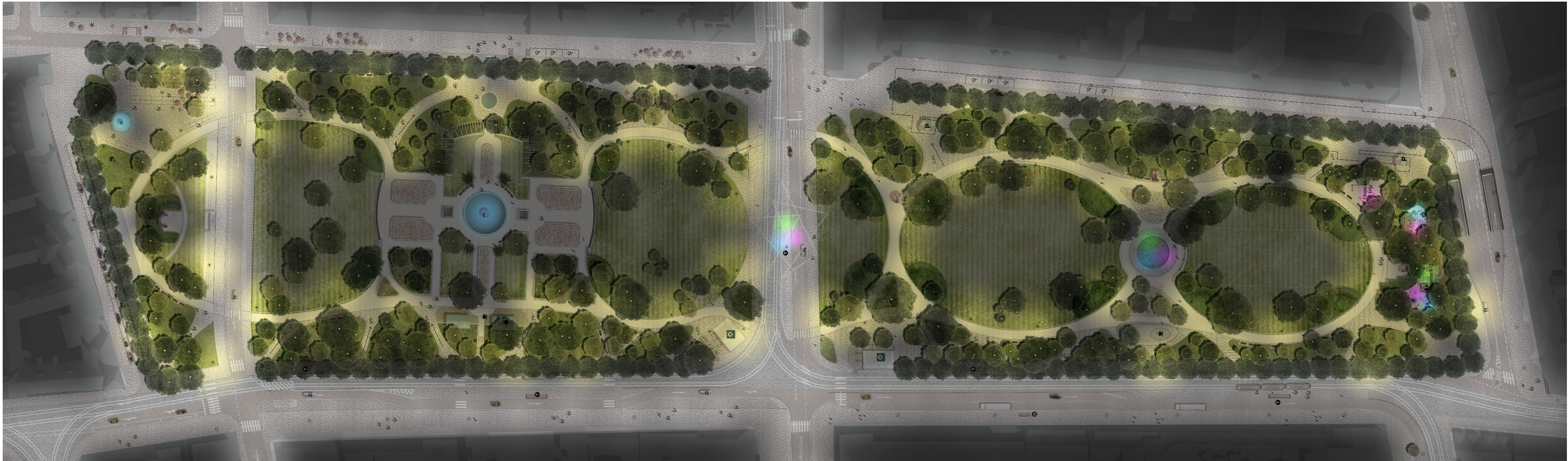
The park kiosk refers to an original stop at Charles Square



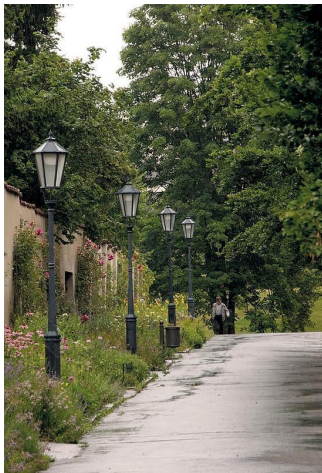
Collage of the park kiosk

ARCHITECTURE AND LIGHTING

Buro Sant en Co | Atelier M1 | Promika



Lost Chapel light art installation. The Chapel is hologrammatic projected in the mist with light. This can only happen when the humidity in the sky is high, creating mythical art. The example is inspired by Janet Echelman.

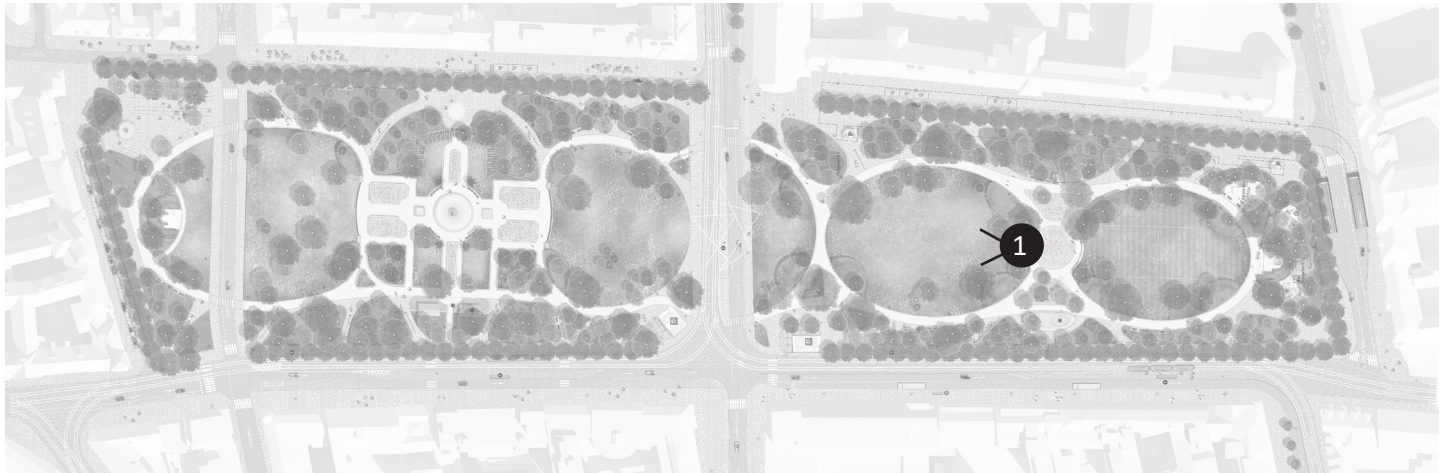


Historical lamp poles with LED armature



Colorful lighting at special objects like the fountains in the water playground







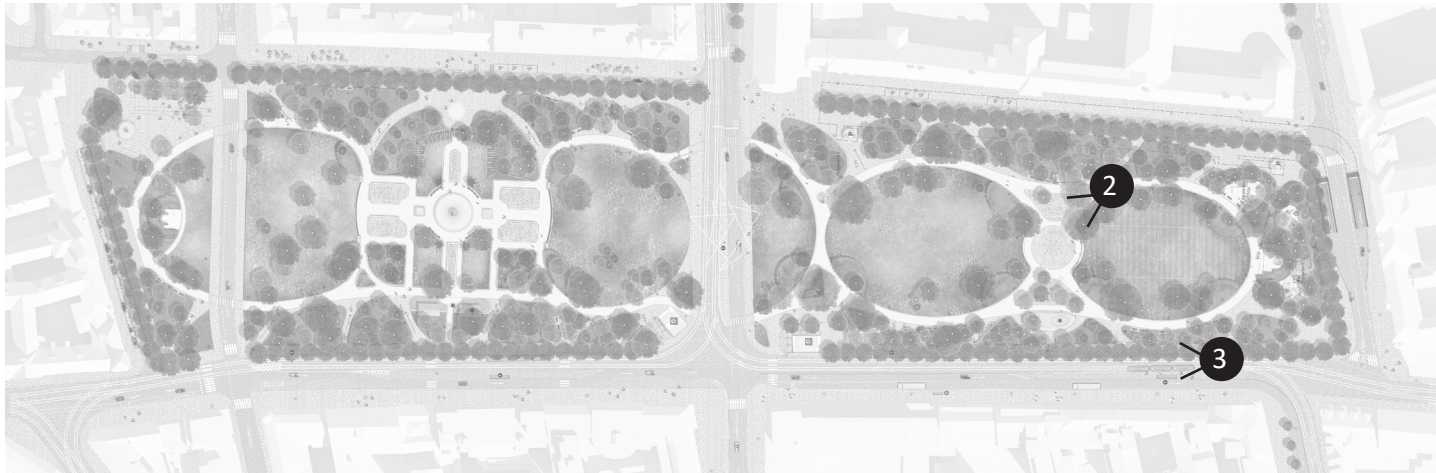
2. WATER PLAY GROUND

Visible focal point in the South



3. HEIGHT DIFFERENCE BETWEEN PARK AND CITY

Implementation of stairs between the higher park on the South West side and the street





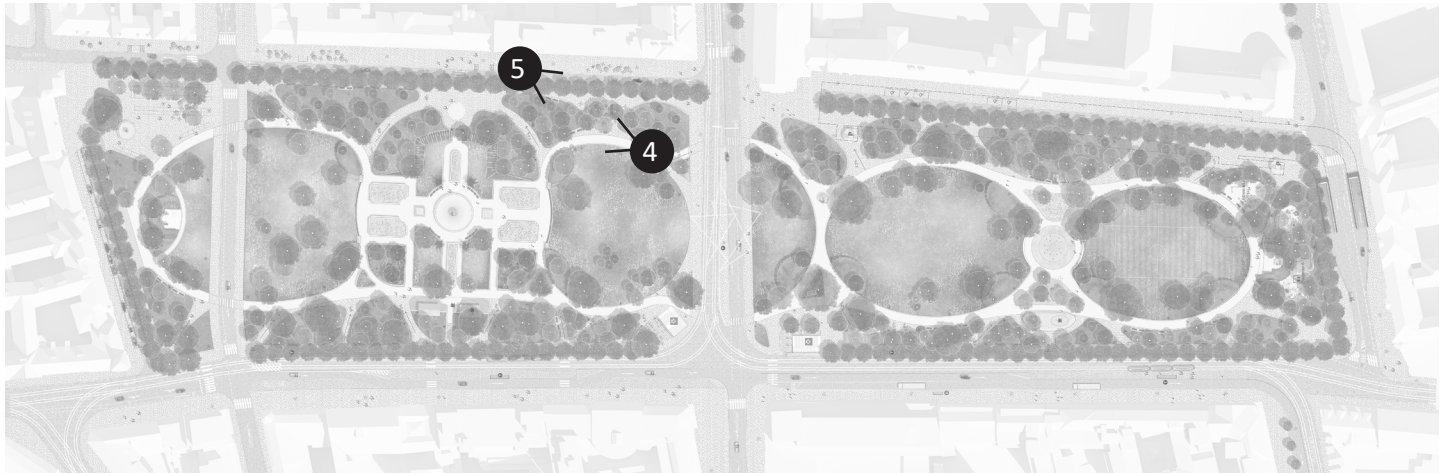
4. FLUENT CONNECTION BETWEEN PARK AND CITY

Perforated green mantle

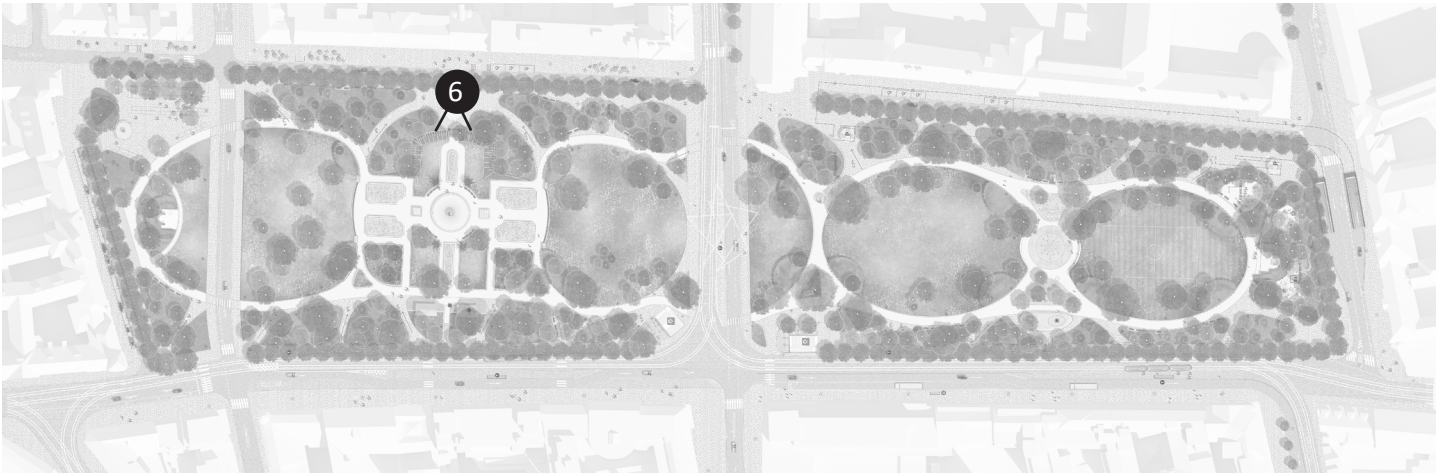


5. PROGRAMMING THE EDGE

Strong relation between park and city











MASTERPLAN OF CHARLES SQUARE 2050

Buro Sant en Co | Atelier M1 | Promika

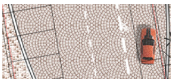


m 1:1000

Pavement



City carpet sidewalks, lime stone 5 x 5 cm, mix Prague standard



Road, granite stone 10 x 10cm, mix Prague standard

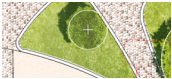


Tram road, natural stone variable x 20 x 12 cm, 'Cat backs' Prague standard

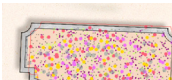


Historic park self binding gravel path (mlatová cesta), grey/yellow colour

Curbs/ walls / edges/ stairs



Curb, sand stone edge of the park paths, flat, 30 cm wide



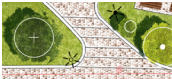
Curb, sand stone edge of the park paths, lifted to sitting height, 50 cm wide



Metal edge between melt park path and stone paving



Curb around perennial planting in the lawns, natural stone, 10 cm wide



Stairs, metal edge and lime stone paving 5 x 5 cm

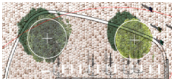
Furniture



Classical bench - renewed Charles square type bench



Monumental stone bench with wooden seat in the garden



Bicycle stands



Playground



Fitness



Lamp post

Planting



Existing tree



New trees



Removed tree



Perennial flowerbed



Compact low flowering shrubs in the garden



Compact high groups of shrubs



Mantle natural-like undergrowths with solitary transparent shrubs

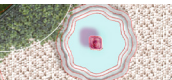


Lawn

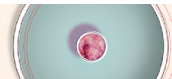


Reinforced gravel lawn for sportfield

Water elements



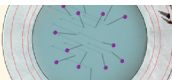
Historic baroque water fountain



Renewed water fountain

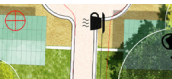


Small scale water elements



Water jets play square

Small architecture



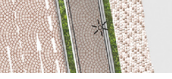
Glasshouse - café and gardeners place



Kiosk



Parkin garage pedestrian entrance



Parkin garage green entrance

